



Crisp-Sage -Shy

3 new styles by

ntgrate®

GEO FLOORING

New Collections from ntgrate

Three new designs from **ntgrate** are inspired from natural materials that we love so much.

Concrete, Marble and Terrazzo

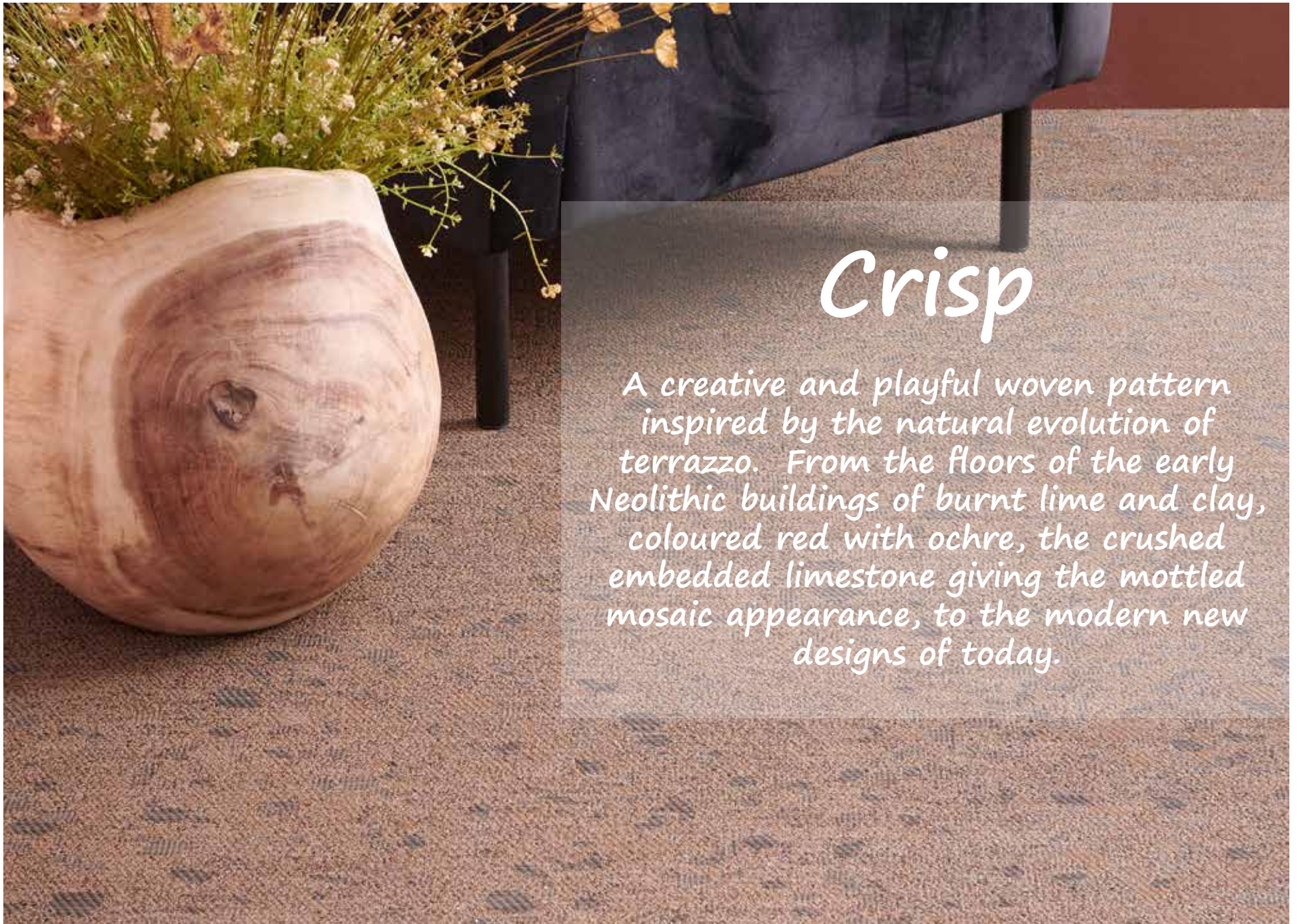
Each with it's own unique design and characteristics that have evolved over time but still retained the essence that is entrenched in the history of design and architecture.

Introducing

Crisp - Sage - Shy

Terrazzo - Marble - Concrete



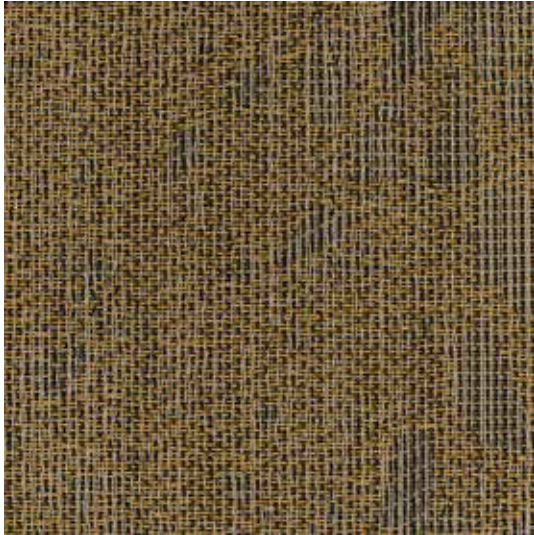


Crisp

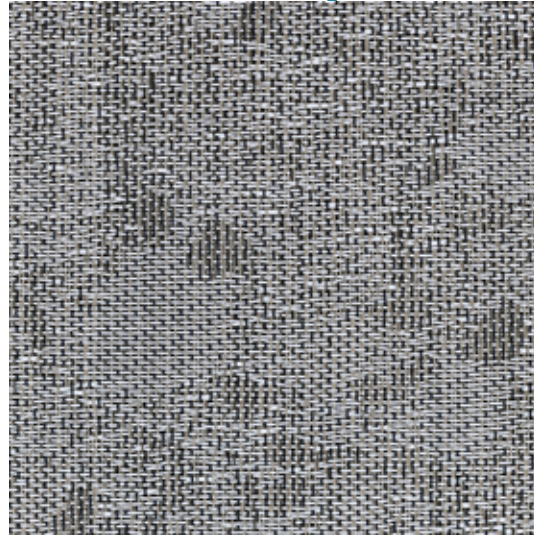
A creative and playful woven pattern inspired by the natural evolution of terrazzo. From the floors of the early Neolithic buildings of burnt lime and clay, coloured red with ochre, the crushed embedded limestone giving the mottled mosaic appearance, to the modern new designs of today.

CRISP - SAGE - SHY

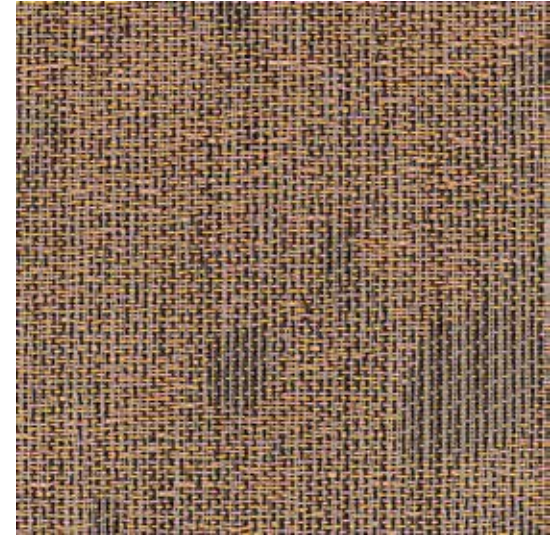
Crisp



Adam



Peter



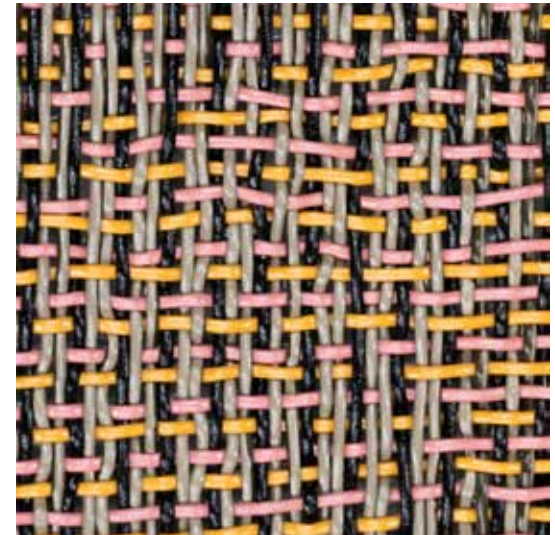
Rosa



Adam (in detail)



Peter (in detail)



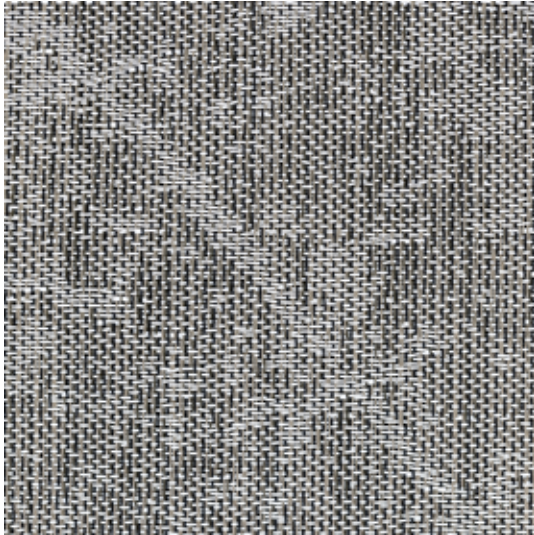
Rosa (in detail)

Sage

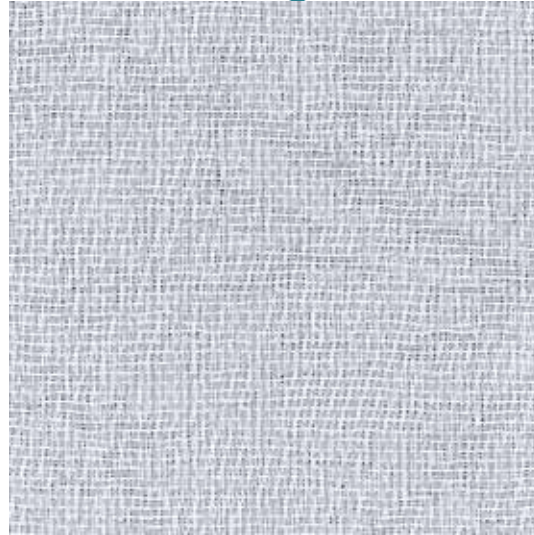
Inspired by the beauty of marble, the interlocking mosaic structure formed by the natural process of recrystallized organic layers of mineral impurities; clay, silt, and grains of limestone, giving the impressive tonal grey and white hues.



Sage



David



Octavie



David (in detail)



Octavie (in detail)

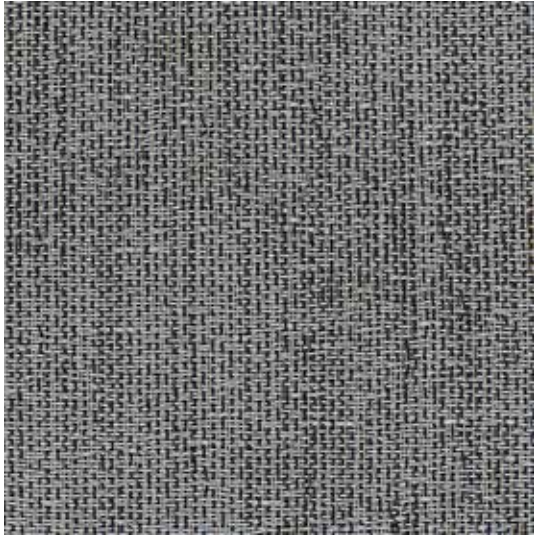
Shy

Shy the perfect style for minimalist, modern interior spaces. Inspired by concrete which has been extensively used for floors since Ancient times.

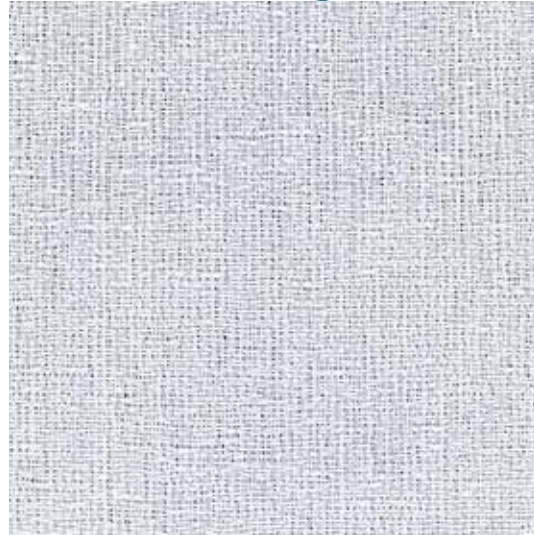
Shy alludes a subtleness that reflects the natural characteristics of concrete that has evolved over time, with the stylish aesthetic for today's contemporary spaces.

CRISP - SAGE - SHY

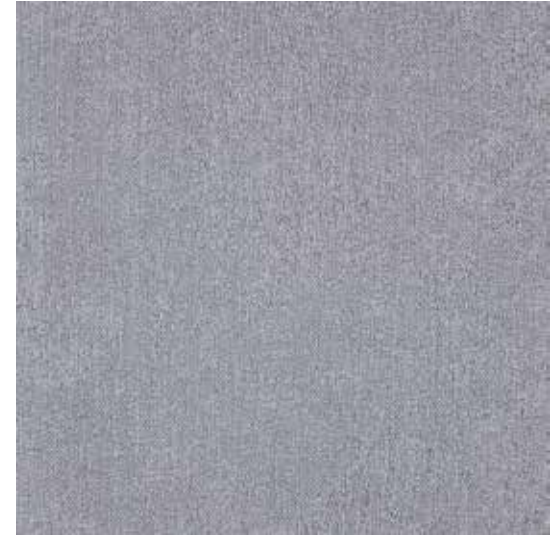
Shy



Boris



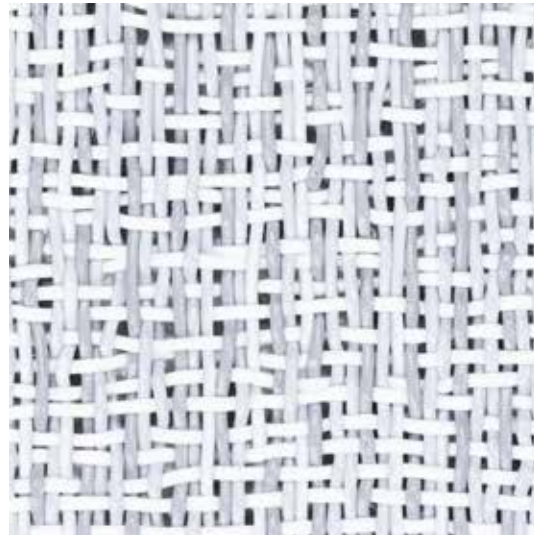
Fee



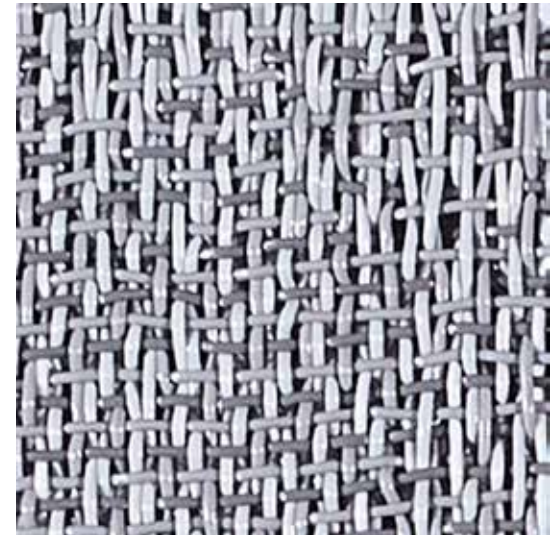
Nina



Boris (in detail)



Fee (in detail)



Nina (in detail)

CRISP - SAGE - SHY

Technical Product Information			
Available Sizes		Tiles	Rolls
Weight	ISO 8543	3 kg /m ²	
Thickness	ISO 1765	4.7 mm	
Dimensions	EN 984	50 x 50 cm	200 cm Width
Backing		Greenfelt 19	
Level of use / Wear Rating*	EN 1307	Class 33	
Dimensional Stability	EN 986	< 0.2%	
Suitable for Castor Chairs	EN 985	Intensive use	
Static Loading	ISO 1815	< 2 kV	
Impact Sound Reduction**	ISO 10140	19dB	
Acoustical Absorption**	ISO 354	15%	
Drum Sound Reduction (foot-fall)**	EN 16205	71 dB (A)	
Light Fastness	EN 105-B02	≥ 7	
Fire Rating	ISO 9239.1	Pass	
Resistance to Fraying	EN 1814	Very Good	
Stain Resistance	EN 423	Very Good	
Slip Resistance	AS4586-2013-A	P2	

* LEVEL OF USE / WEAR RATING - The European Standard for classification of all textile floorcoverings, Class 33 means the product is suitable for Heavy Commercial use (i.e. Public Spaces and high traffic areas).

** ACOUSTICS

- Impact Sound is the sound you perceive in the space and is reduced by 19dB.
- The textile structure of the **ntgrate** floor covering achieves a high acoustic absorption value of 15%, compared to 5% achieved by conventional vinyl floors.
- Drum Sound is footfall or walking sound achieves 71dB, compared to conventional vinyl floors of 80dB. For every reduction of 3dB, there is a 50% reduction of perceived sound, or doubling of comfort.

MAINTENANCE

Easy daily maintenance by vacuuming. Most stains easily removed with a clean cloth and water. Less periodic maintenance required by following simple preventative steps for increased longevity and perfect hygiene.

Sustainability

All **ntgrate** floor coverings contribute to a healthy living and working environment, and have been independently certified to the highest levels.

ntgrate believes in a sustainable future and resolutely and exclusively opts for sustainable investments. They lead by example and all of their production and offices are housed in a their new BREEAM certified building in Kortrijk, Belgium.

As responsible manufacturers, **ntgrate** strive for a sustainable future and focus on circular construction.

- All energy used during manufacturing is from renewal resources and their solar panels.
- Rainwater is collected and reused.
- 100% of waste is recycled at authorised partners for reuse into other items.
- **ntgrate** is 100% recyclable and is used in temporary road plates.
- 66.4% from natural raw materials or recycled materials.



