



GEO FLOORING

Shapeshifter 2

SHAPESHIFTER 2



*Colour - Alter,
Installation - Brick Plank*

SHAPESHIFTER 2



Alter 400049



Analogy 400036



Changelings 400045



Copies 400039



Double Take 400041



Liquidification 400042

SHAPESHIFTER 2



*Colour - Mimic,
Installation - Herringbone Tile*

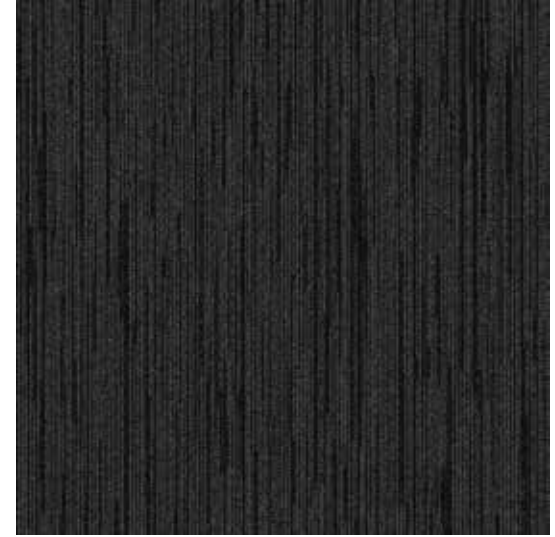
SHAPESHIFTER 2



Lycan 400044



Meta-morph 400048



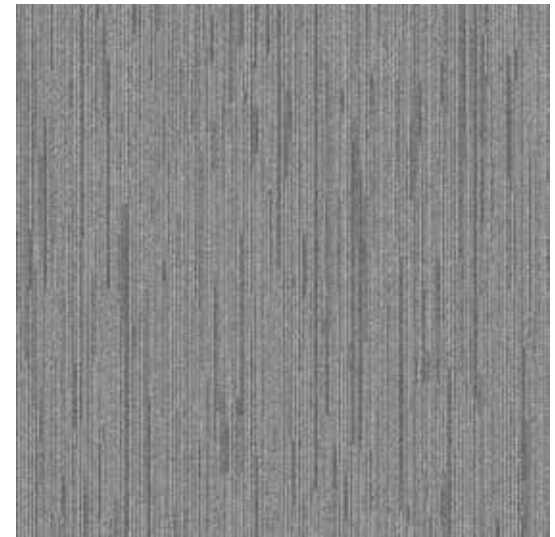
Mimic 400046



Proxy 400040



Reshape 400035



Restated 400047

SHAPESHIFTER 2



*Colour - Sublimation,
Installation - Quarter Turn Tile*

SHAPESHIFTER 2



Revamp 400038



Sublimation 400043



Switch 400037



Variation 400050



SHAPESHIFTER 2

	<i>Broadloom</i>	<i>EliteFlex</i>	<i>Modular</i>
<i>Backing</i>	Optimum Barrier II	EliteFlex Cushion	Affirma II
<i>Size</i>	3.66 m Width	1.83 m Width	Tile - 60.96 x 60.96 cm Planks - 22.86 x 91.44 cm & 45.72 x 91.44 cm
<i>Total Weight</i>	2,475.1 g/m ³	3,017.6 g/m ³	2,034.3 g/m ³
<i>Stitches</i>	10.7 / inch (42.1 ends/10 cm)		
<i>Thickness</i>	5.8 mm	8.1 mm	5.3 mm
<i>Construction</i>	Tufted Textured Loop		
<i>Fibre</i>	Bentley Premium Type Nylon		
<i>Machine Gauge</i>	1/12 in (47.2 ends/10 cm)		
<i>Dye Method</i>	Solution Dyed		

GEO Flooring Pty Ltd

www.geoflooring.com.au
info@geoflooring.com.au
+61 2 9960 4199

