



**Outlier**

**GEO FLOORING**





Our worlds are colliding. Boundaries between home and office, personal and professional are blurring more than ever.

Today's generation craves it – a subtle yet sophisticated integration of work and play no matter where they are. It's a spirited shift in culture and style, fusing form with function in ways we've not quite seen before.

The bold geometrics of Outlier are as unique in shape as they are stunning in colors and shades. Metallic lines and insets give the pattern-over-background an unexpected elegance.

Along with Environmental Product Declarations (EPDs) and Health Product Declarations (HPDs), Outlier products also contain Declare® labels and have achieved LBC Compliant status through the Living Building Challenge.





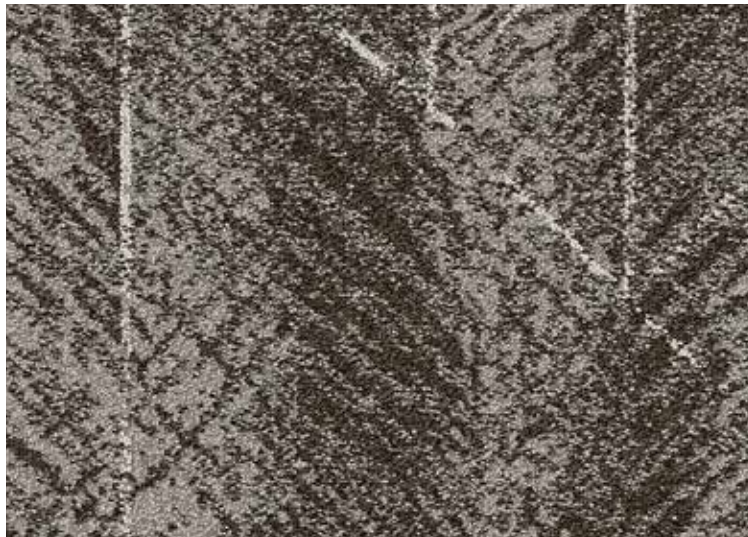
# Outlier



Borderland 801682



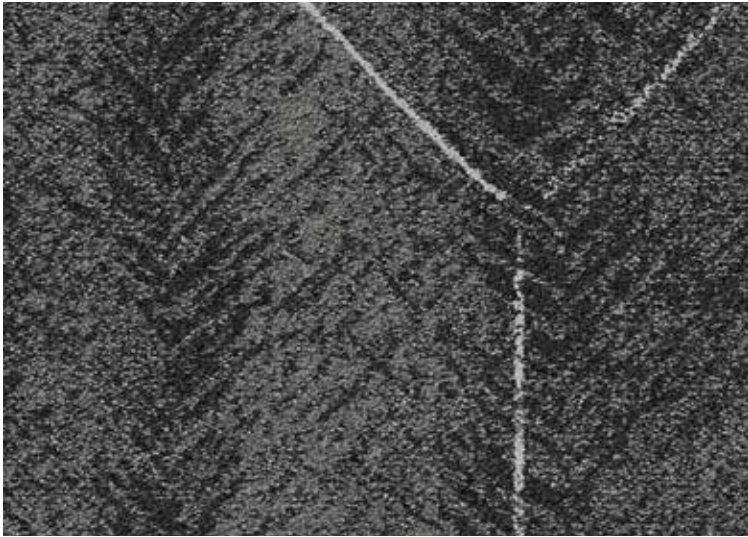
Brink 801674



Habitat 801671



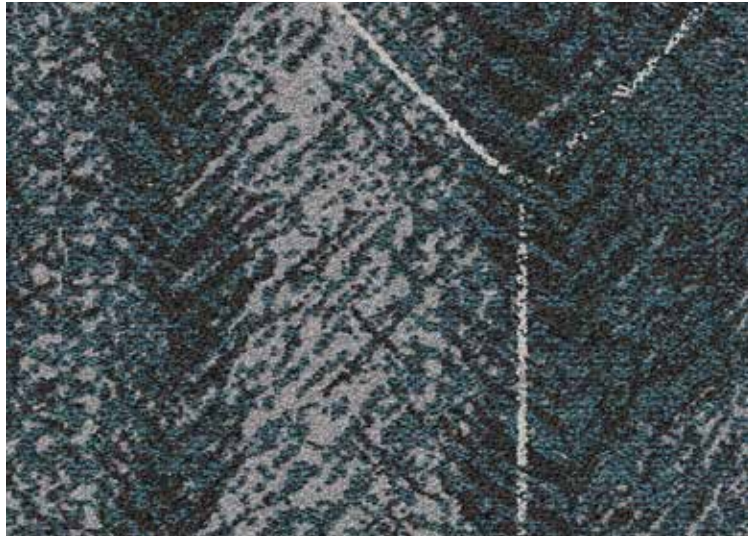
Margin 801675



Environs 801681



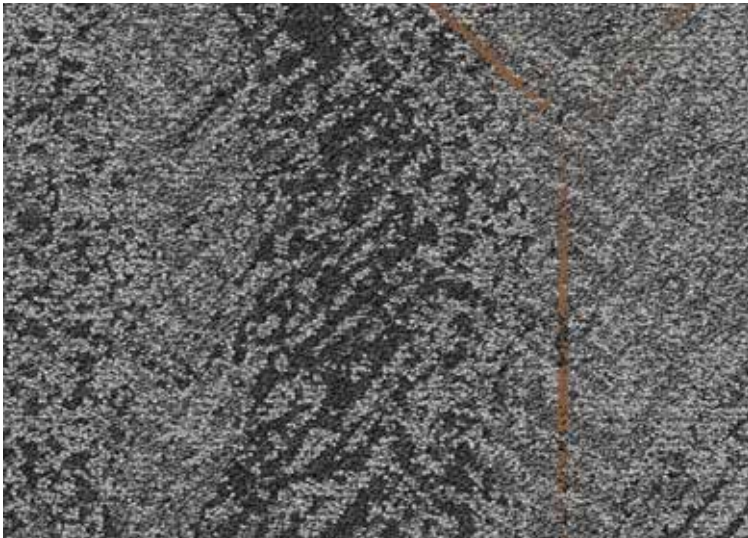
Extremity 801681



Perimeter 801680



Subdivision 801678



Fringe 801679



Frontier 801670



Territory 801673



Verge 801672



# Outlier

---



Vicinity 801676





# Outlier

---





# Product Specifications

	Broadloom	Modular
Backing	Optimum Barrier II	Affirma II
Size	3.81 m width	Tile: 60.96 x 60.96 cm Skinny Plank: 22.86 x 91.44 Plank: 45.72 x 91.44 cm
Constuction	Tufted Textile Loop	
Dye Method	Solution Dyed	
Machine Gauge	1/10 in (39.4 ends/10 cm)	
Total Weight	2,712.7 5/m2	2,746.4 g/m2
Fibre	Antron® Lumena DNA Nylon Type 6,6	
Stitches	11.0/in (43.3 ends/10 cm)	
Thickness	9.1 mm	7.0 mm
Pattern Repeat	190.5 cm W x 151.13 cm L	N/A







[www.geoflooring.com.au](http://www.geoflooring.com.au)