

GEO FLOORING

Off The Chain





As the world begins to orient to our “new normal” and we return to the office and other work, learn and play environments, most of us will continue to crave the familiarity, solace and security of home.

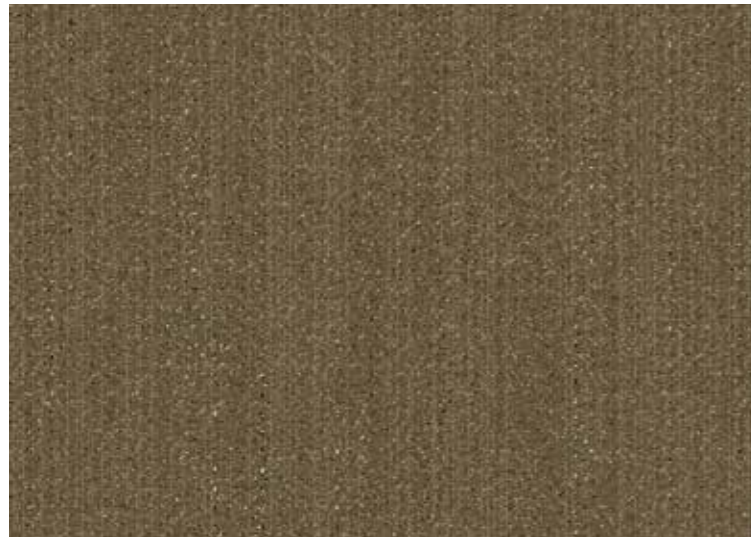
Off The Chain captures these feelings, a carpet inspired by the literal and figurative warmth of wool. It mimics the highs and lows of chain stitches as well as the personality of slub yarn – simple yet sophisticated, full of character with tons of texture.

Off The Chain's 12 colorways are elevated, classic neutrals that will warm even the starkest of spaces. The result is a cozy, inviting product that designers will find themselves turning to again and again.

Along with Environmental Product Declarations (EPDs) and Health Product Declarations (HPDs), Off The Chain products also contain Declare® labels and have achieved LBC Compliant status through the Living Building Challenge.



Off The Chain



Braid 800122



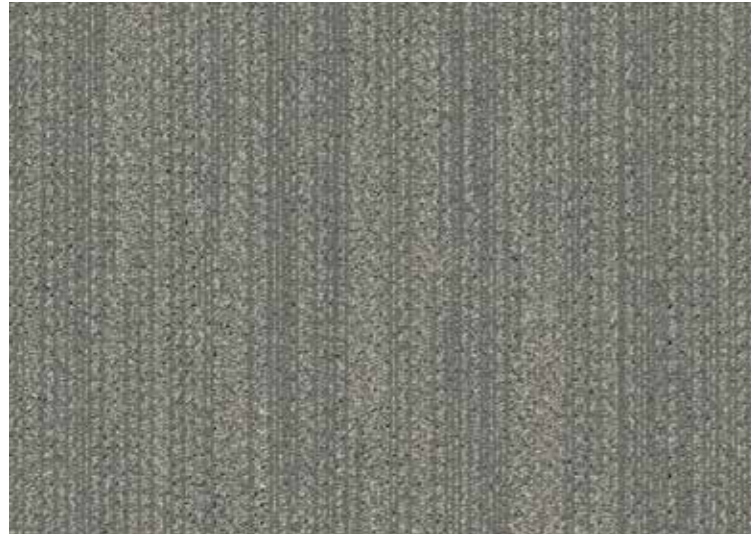
Cable 800131



Loop 800127



Needle 800121



Double 800128



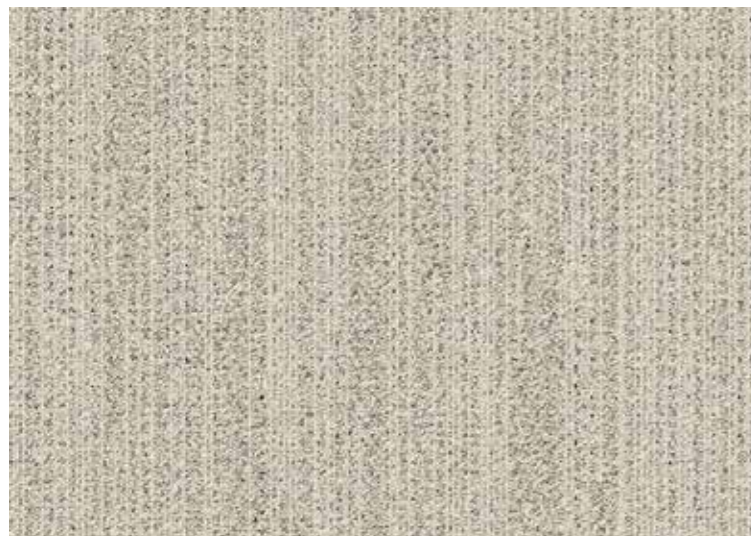
Knotted 800130



Open 800125



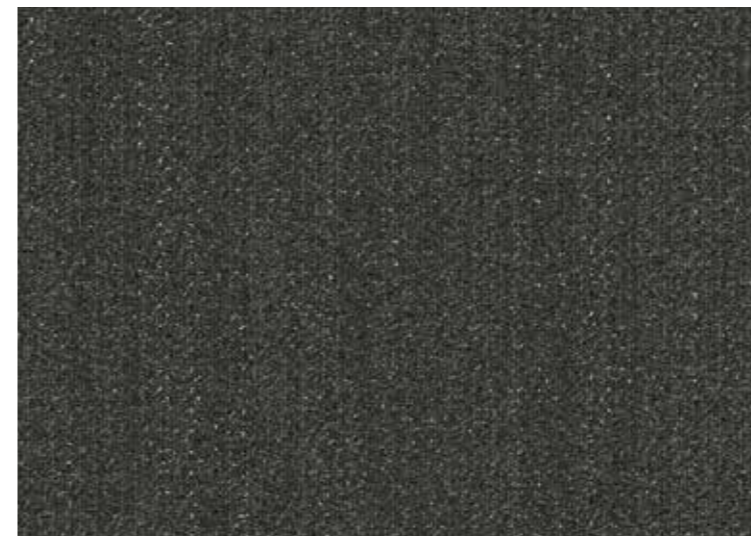
Pick 800124



Line 800120



Lock 800129

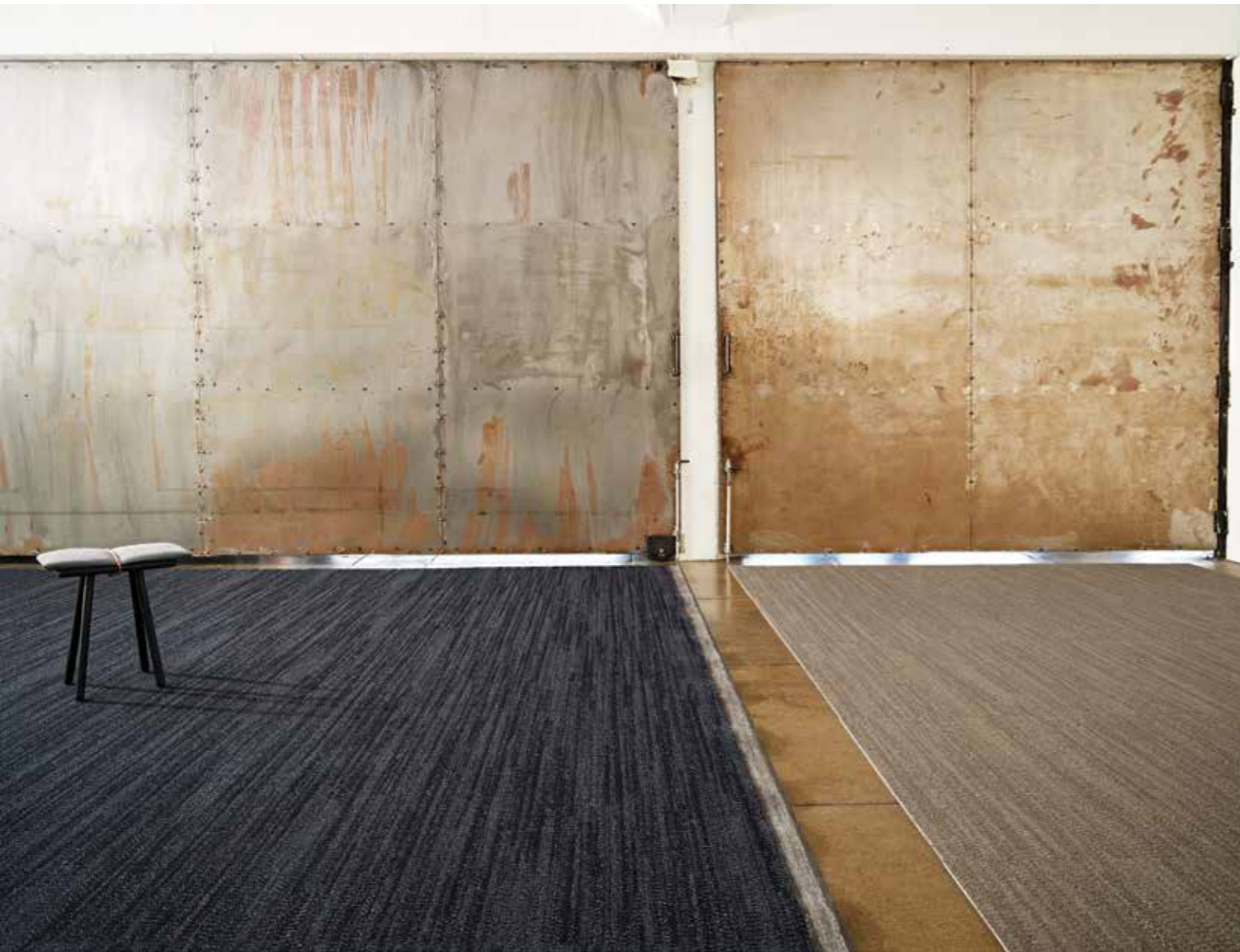


Stitch 800126

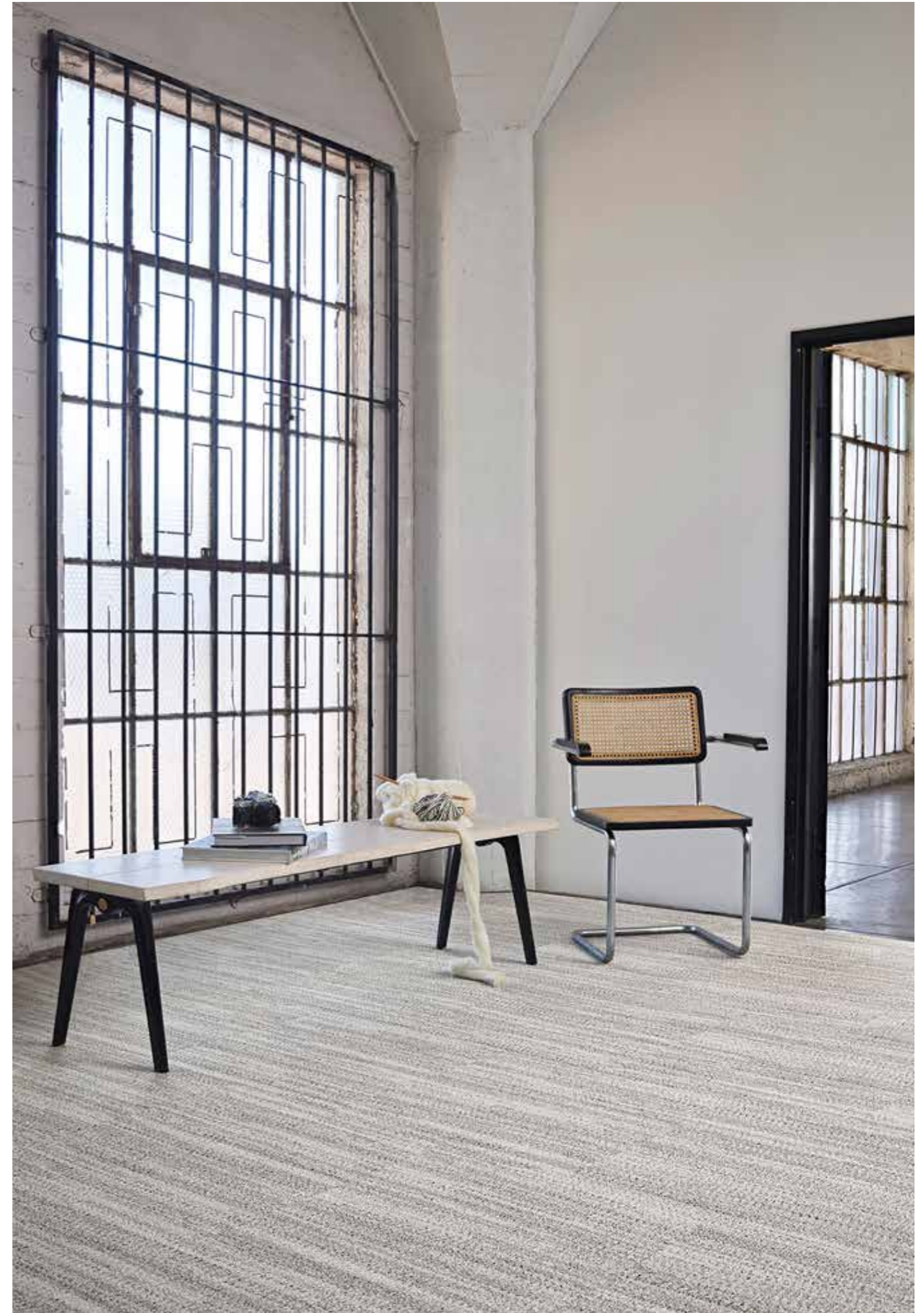


Twisted 800123

Off The Chain

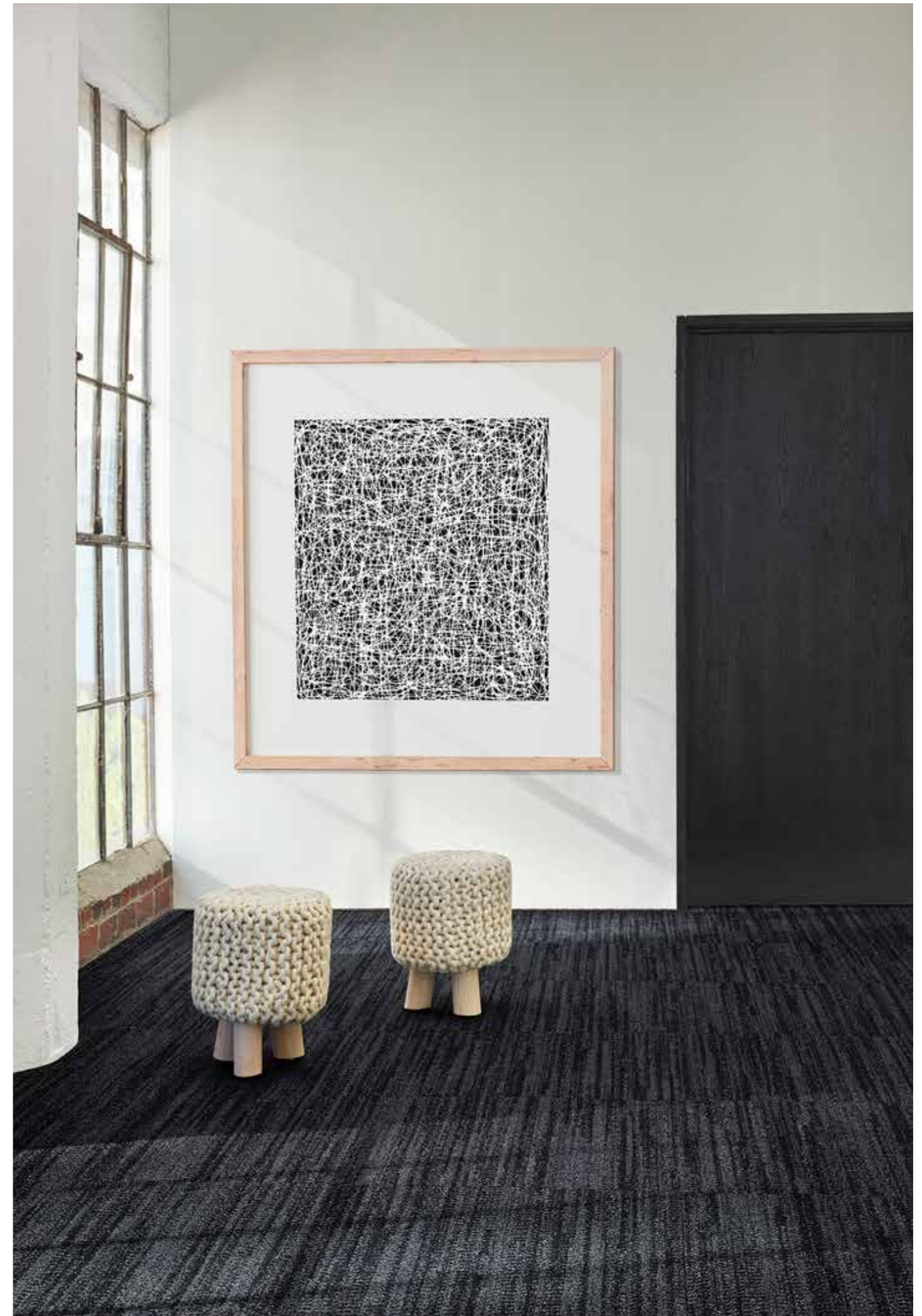


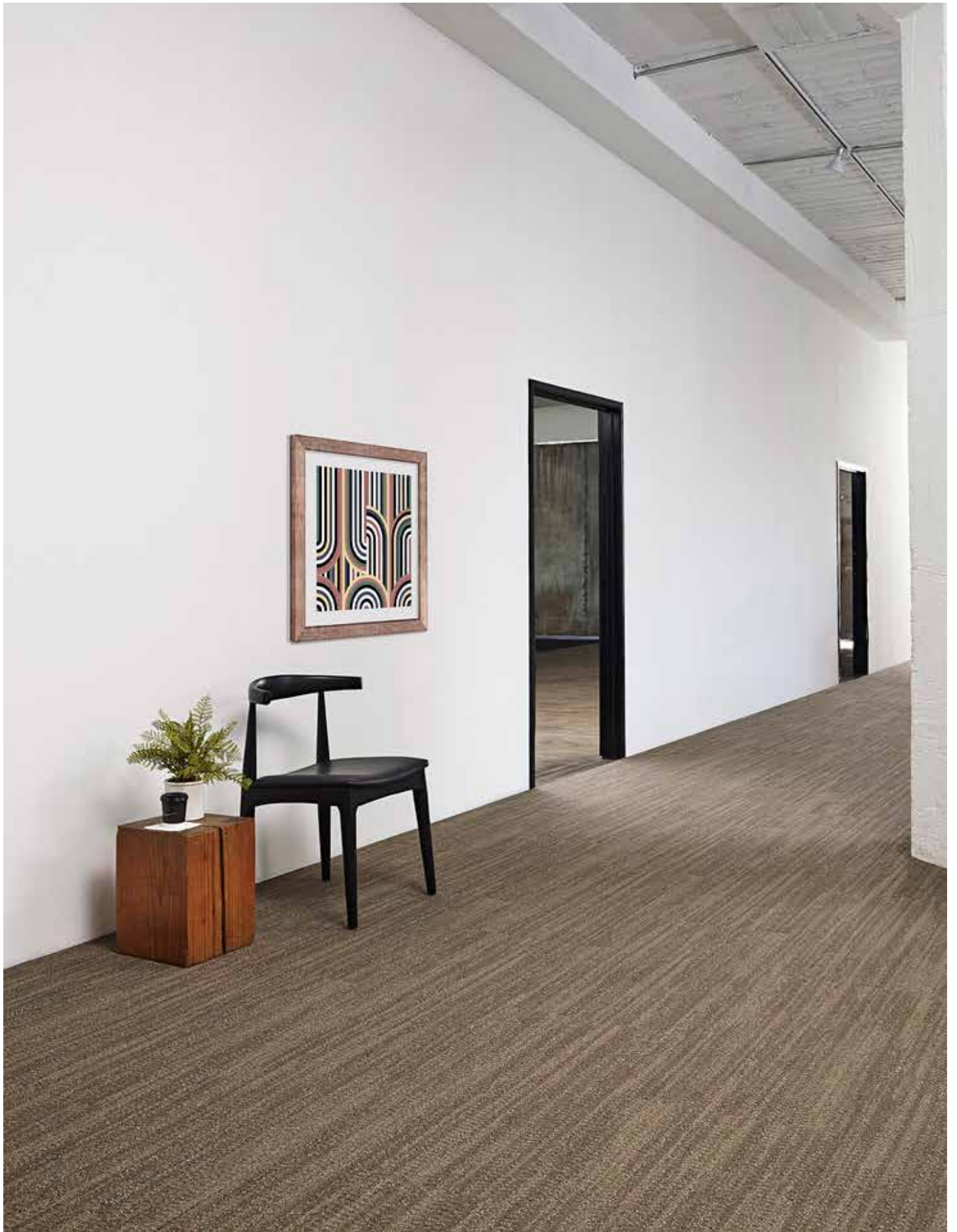
Off The Chain



Product Specifications

	Broadloom	EliteFlex	Modular
Backing	Optimum Barrier II	Elite Flex Hardback / Cushion	Affirma II
Size	3.81 m width	1.83 m width	Tile: 60.96 x 60.96 cm Plank: 45.72 x 91.44 cm
Constuction	Tufted Textile Loop		
Dye Method	Solution Dyed		
Machine Gauge	1/10 in (39.4 ends/10 cm)		
Total Weight	2,610.7 g/m2	Hardback - 2,407.3 g/m2 Cushion - 3,255 g/m2	2,407.3 g/m2
Fibre	Antron® Lumena DNA Nylon Type 6,6		
Stitches	10.0/in (39.4 ends/10 cm)		
Thickness	7.00 mm	Hardback - 6.5 mm Cushion - 9.0 mm	6.5 mm
Pattern Repeat	95.25 cm W x 182.88 L		N/A





www.geoflooring.com.au