

GEO FLOORING

A woman in a dark, ruffled dress stands in a dimly lit room with blue lighting, looking towards a large, illuminated architectural model or display. The scene is atmospheric and futuristic.

Invisible Visionaries Collection



Allegro

Allegro

Interlude

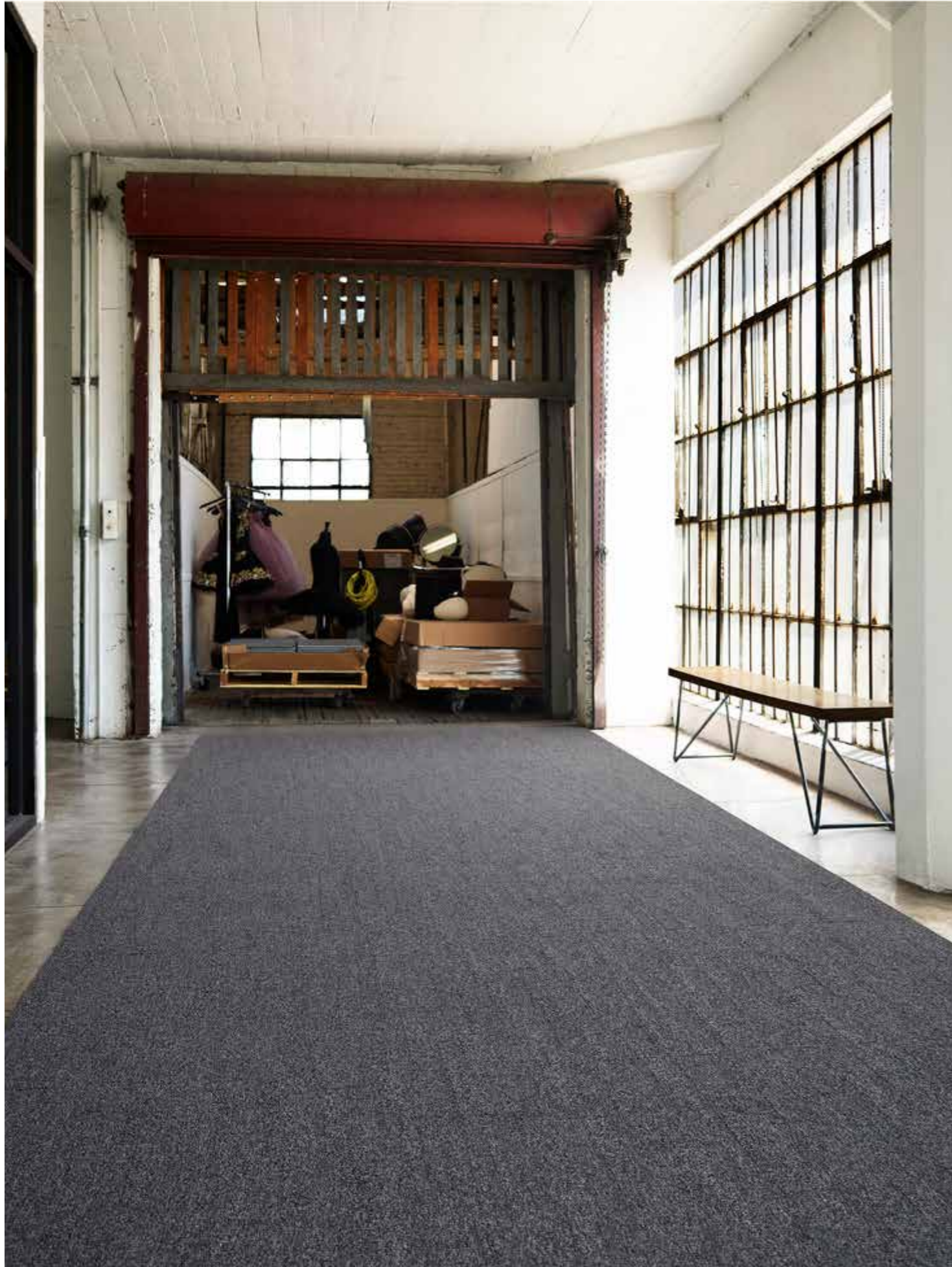
Backstage

Invisible Visionaries specifically applauds the tremendous talent of costume designers with **Allegro** and **Interlude**.

With its nod to the fabrics of the trade, **Allegro** explores the juxtaposition of the delicate nature of what a dancer wears and the physicality of how that costume must perform. It's grace and grit personified. While **Allegro** represents movement, **Interlude** examines craft, and the constant pleating and pinning that happens with each fitting.

A costume designer spends unimaginable hours creating fabric personas for each member that steps upon the stage.

The quiet energy found behind the scenes is the source of inspiration for Bentley's **Backstage**. With muted colour that supports the subtle movement of the patterning, this product is ready to step into the spotlight and become the star of your show.

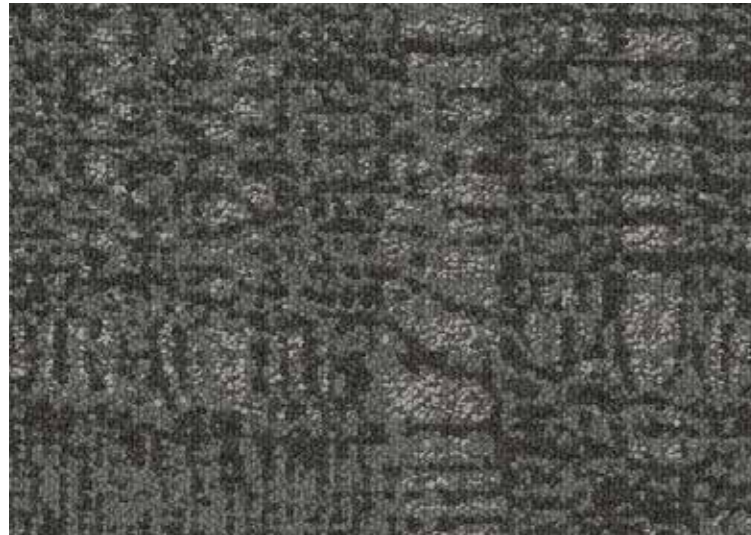


Backstage



Interlude

Allegro



Flow 800241



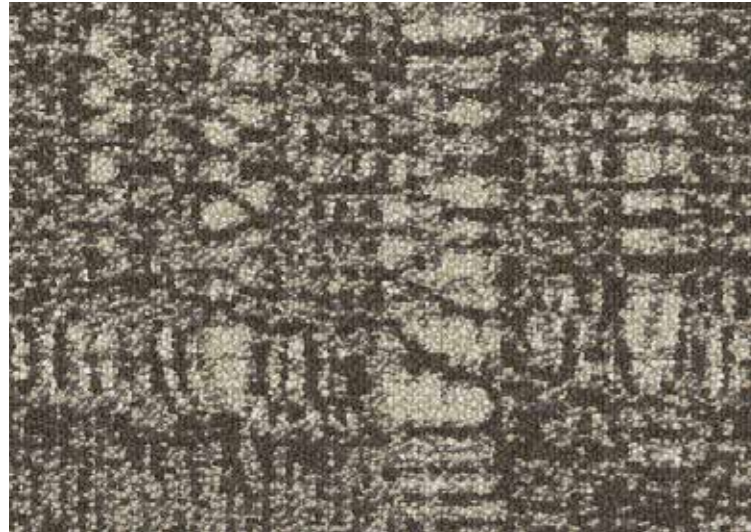
Intermission 800251



Pace 800244



Pulse 800243



Interval 800245



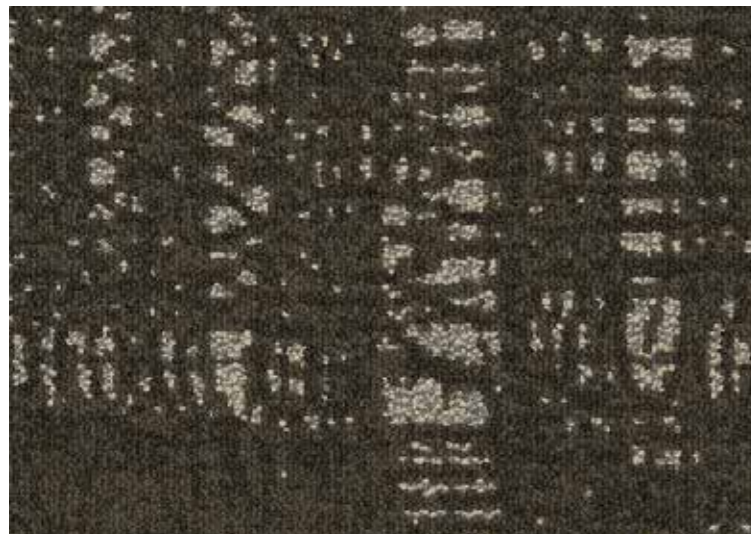
Lull 800246



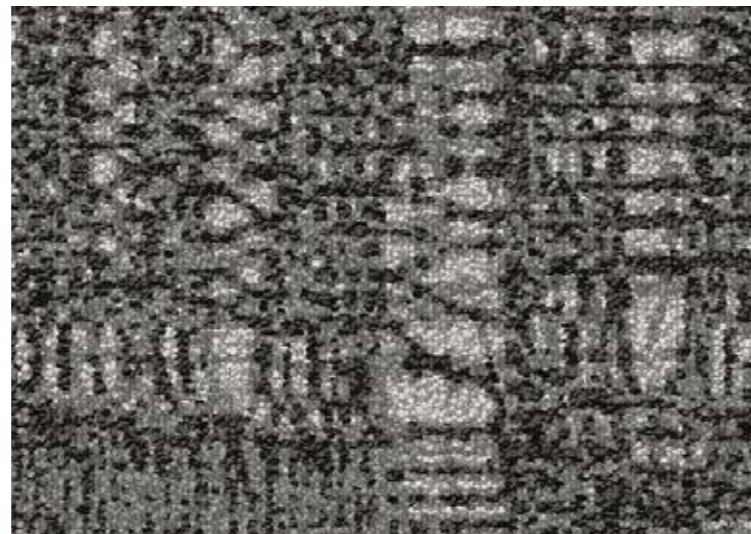
Respite 800250



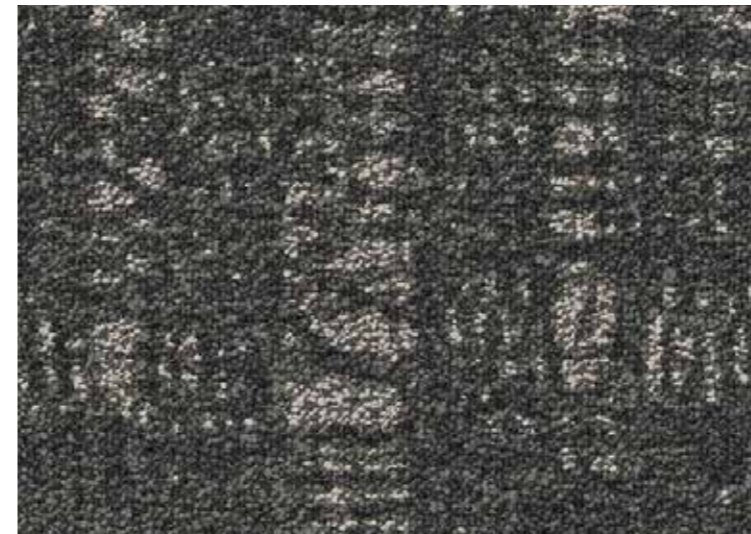
Rhythm 800240



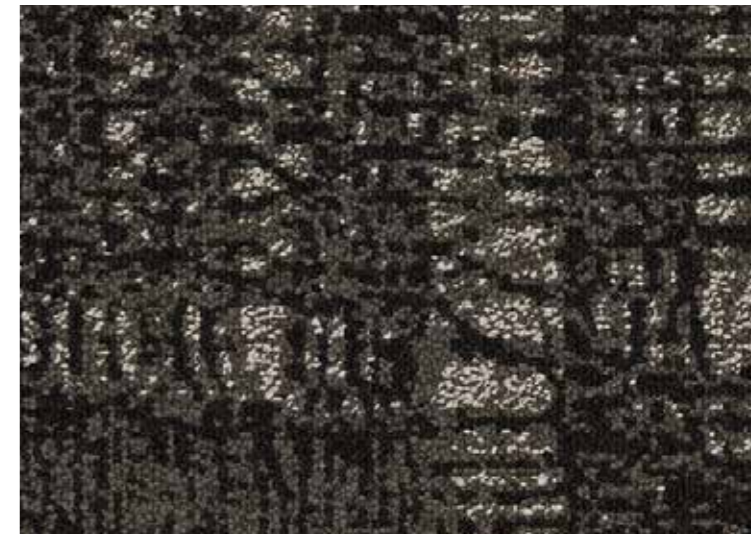
Measure 800249



Momentum 800242



Surge 800248

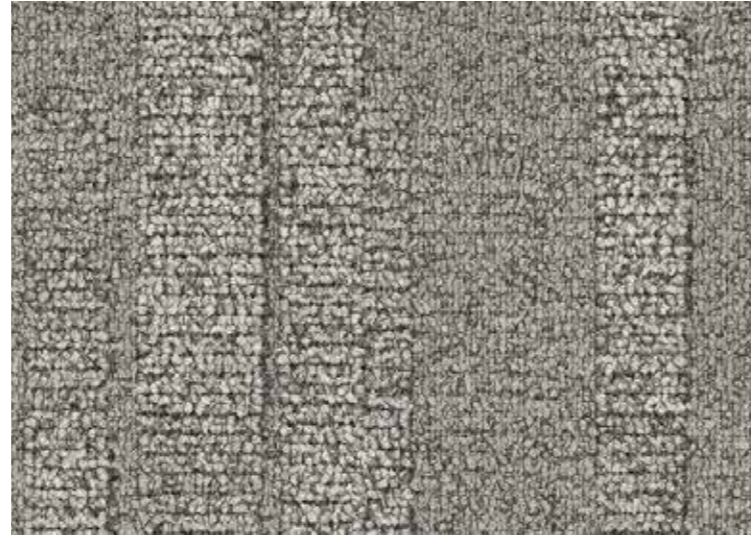


Swell 800247

Backstage



Bridge 802112



Call Board 802104



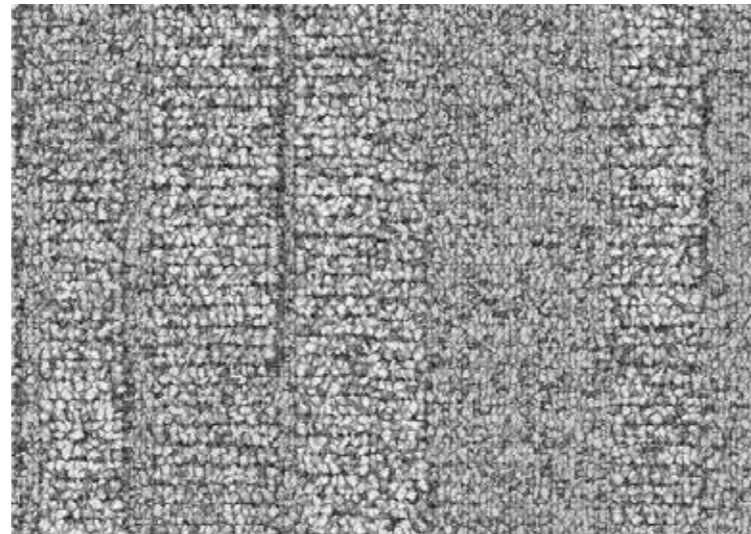
Catwalk 802114



Crossover 802102



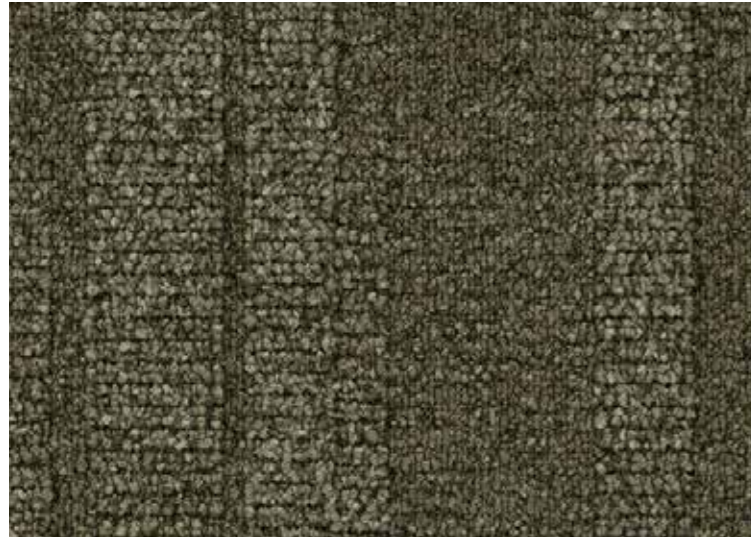
Fly Rail 802103



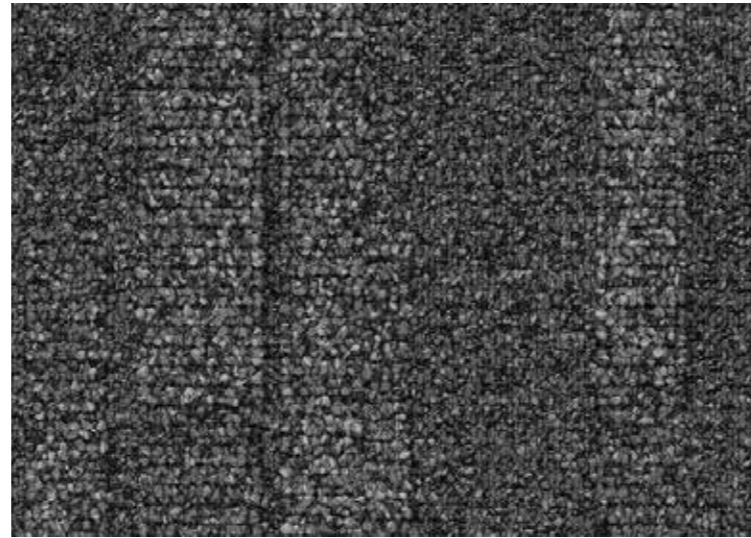
Gantry 802100



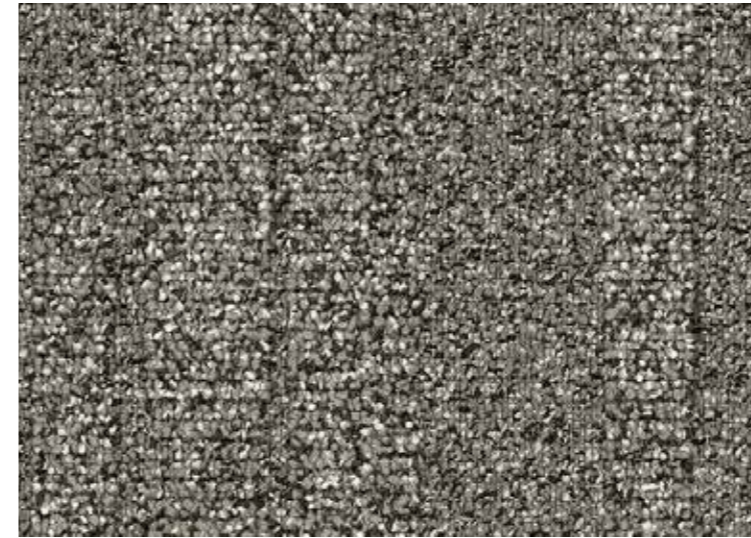
Backstage



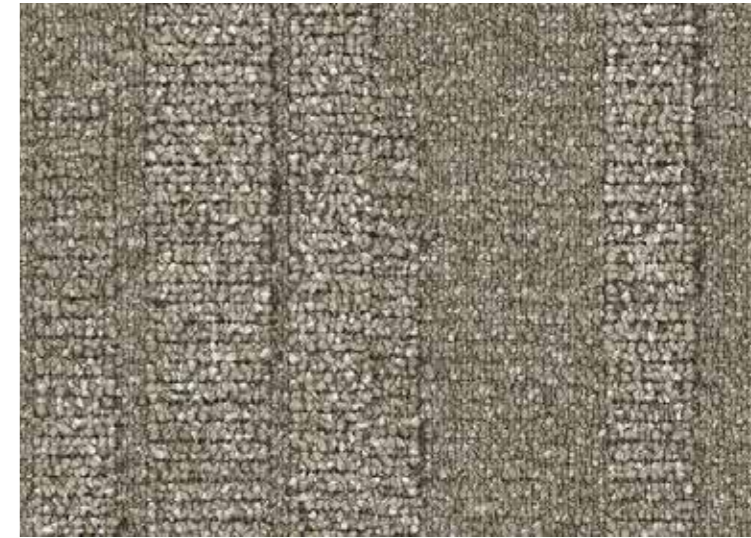
Green Room 802111



Line Set 802113



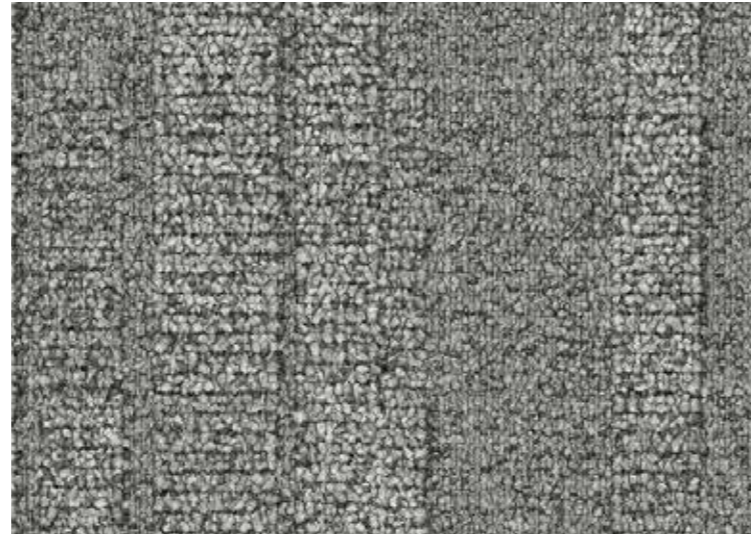
Scenery 802106



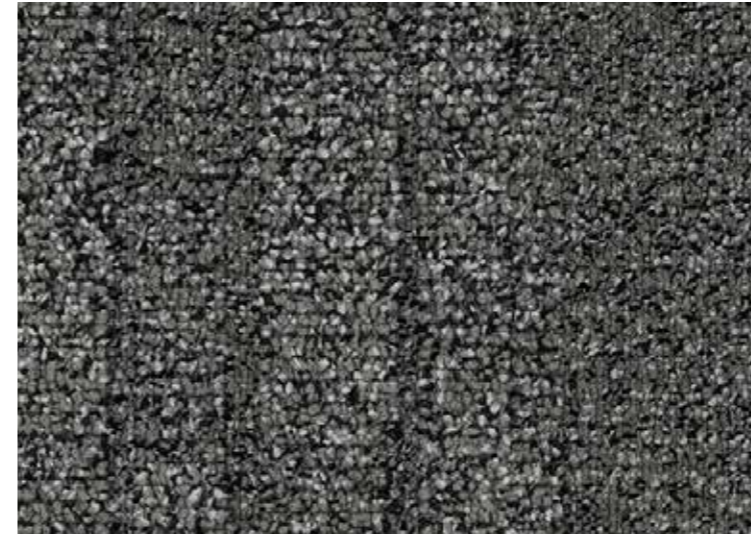
Stage Door 802108



Make-Up 802110



Perch 802101



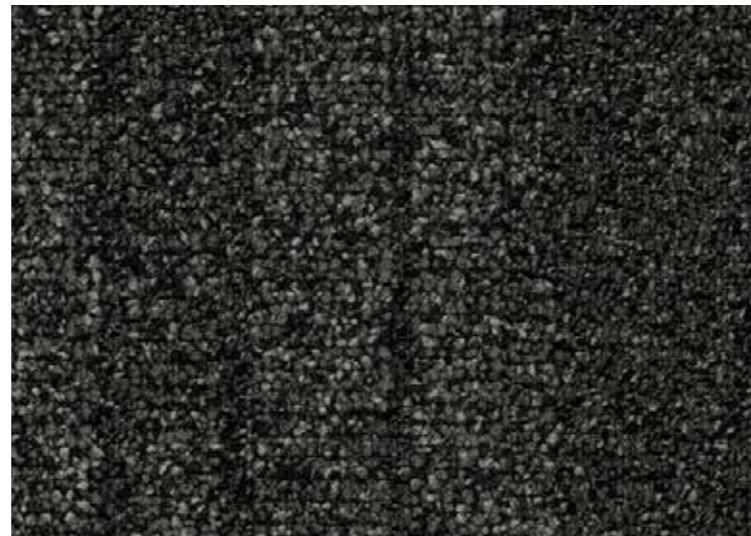
Wardrobe 802105



Wings 802115



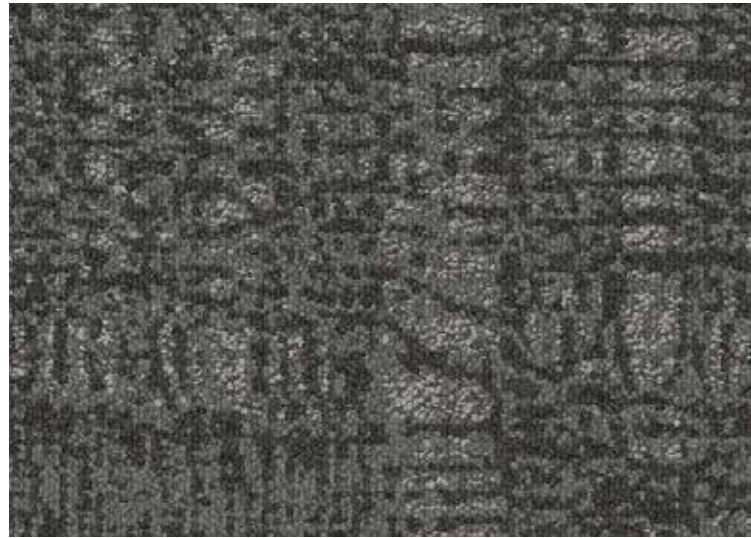
Prompt 802109



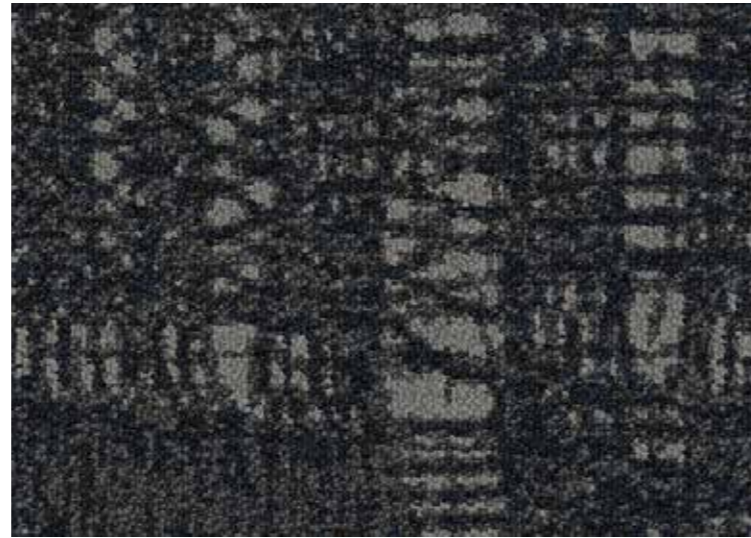
Props 802107



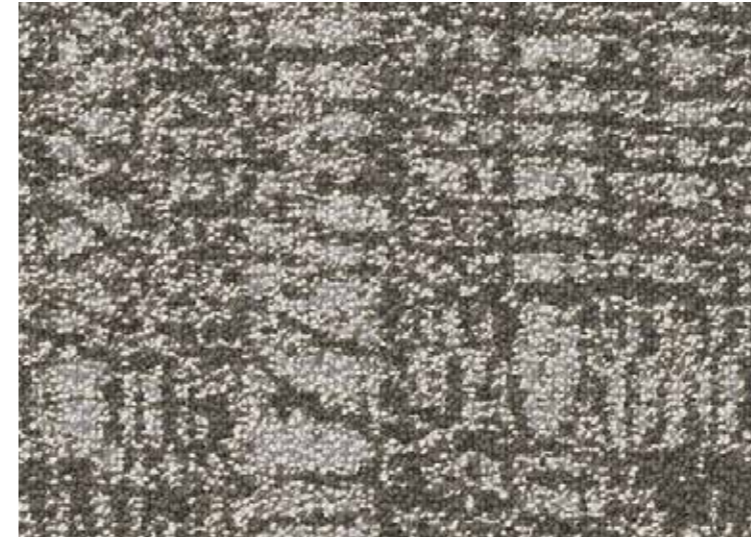
Interlude



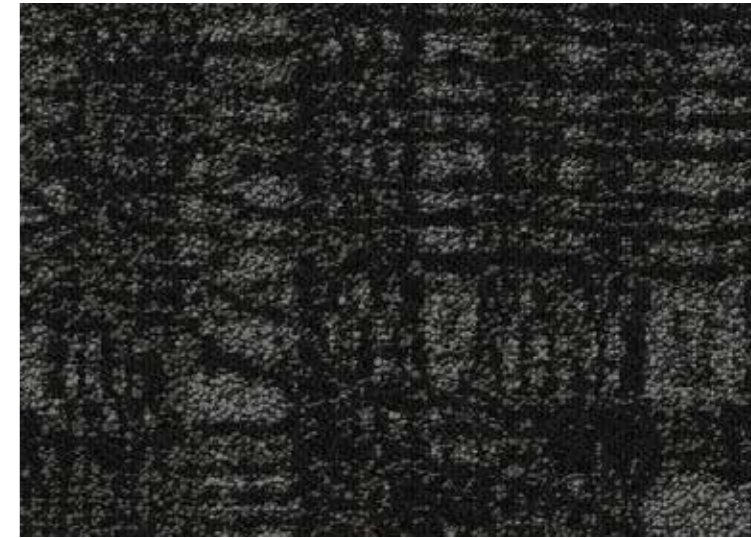
Flow 800241



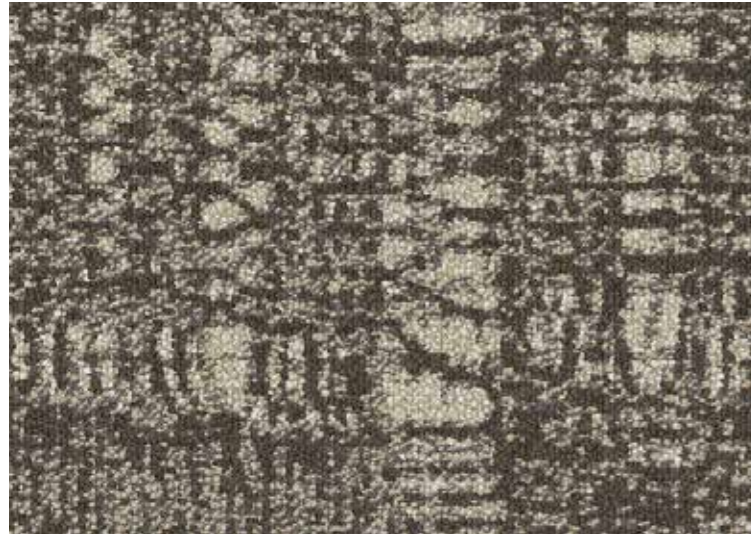
Intermission 800251



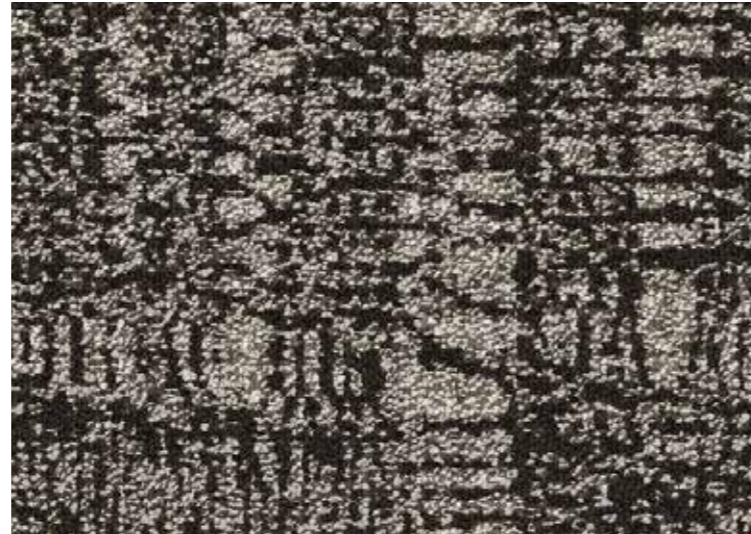
Pace 800244



Pulse 800243



Interval 800245



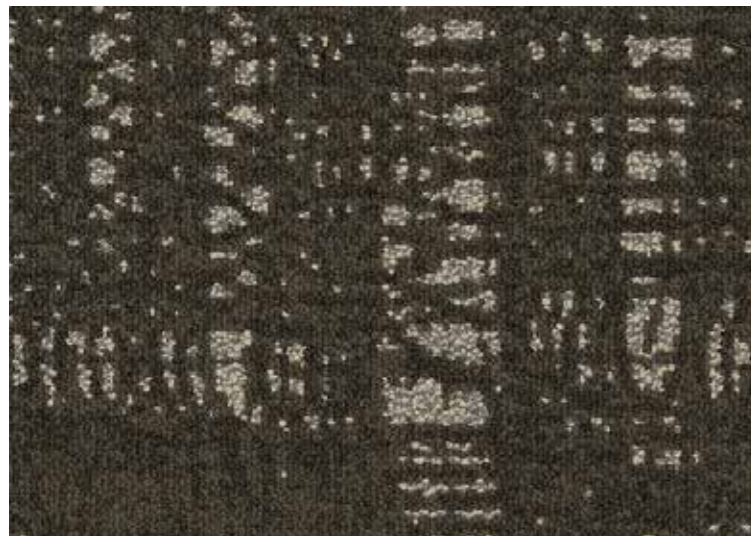
Lull 800246



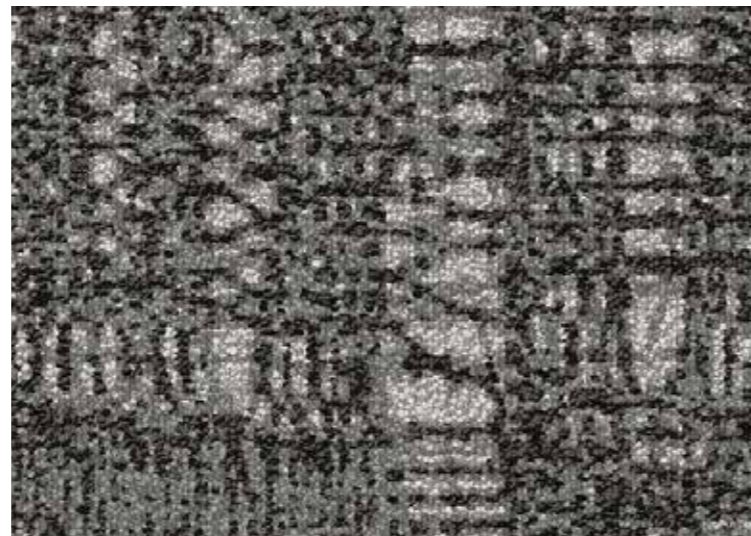
Respite 800250



Rhythm 800240



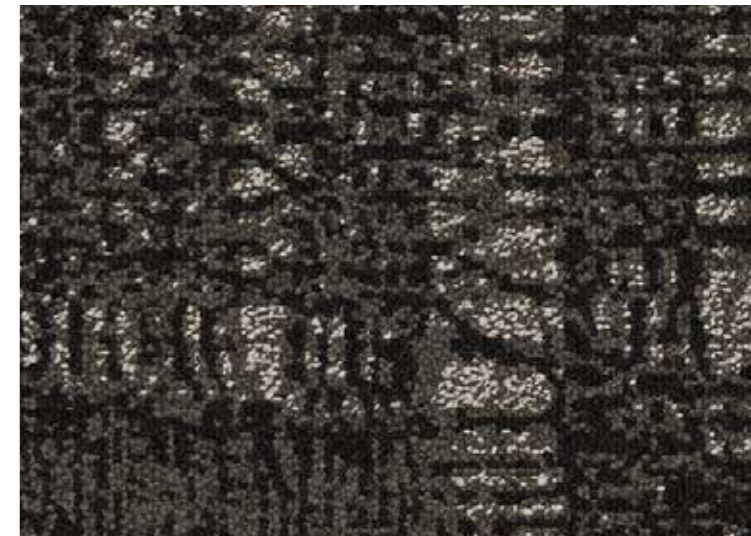
Measure 800249



Momentum 800242



Surge 800248



Swell 800247

Product Specifications

		Modular		Broadloom		
Backing		Tile	Plank	Optimum Barrier II	Elite Flex	Elite Flex Cushion
Size		60.96 x 60.96 cm	45.72 x 91.44 cm	3.81 m Width	1.83 m Width	
Pattern Repeat	Allegro	N/A		95.25 cm W x 204.98 cm L		
	Interlude	N/A		121.92 cm W x 251.97 cm L		
	Backstage	N/A		38.1 cm W x 195.38 cm L		
Machine Gauge	Allegro	39.4 ends / 10 cm (1/10 inc)				
	Interlude					
	Backstage					
Stitches	Allegro	42.1 ends / 10 cm				
	Interlude	38.6 ends / 10 cm				
	Backstage	51.2 ends / 10 cm				
Pile Density	Allegro	8,806 oz/ yd ³				
	Interlude	11,199 oz/ yd ³				
	Backstage	6,792 oz/ yd ³				
Total Weight	Allegro	2,407.3 g / m ²	2,542.9 g / m ²	2,407.3 g / m ²	3,255.0 g / m ²	
	Interlude			2,339.5 g / m ²		
	Backstage	2,374.4 g / m ²	2,509.0 g / m ²	2,305.0 g / m ²	3,221.0 g / m ²	
Total Thickness	Allegro	6.4 mm	6.9 mm	6.4 mm	8.9 mm	
	Interlude	5.7 mm	6.2 mm	5.7 mm	8.3 mm	
	Backstage	6.0 mm	6.5 mm	6.0 mm	8.5 mm	

