

GEO FLOORING

A modern interior scene featuring a large framed artwork of a textured sphere, a wooden cabinet with a red book, and a grey carpet.

Color Core



The intricacies of Color Core are created using a unique fibre technology and innovative twist process, giving a depth of texture and complexity of colour that you will not forget.

Grounded by contrasting yet complementary yarn components; traditional reds, blues, browns, and greys subtly expose a multifaceted identity as they emerge and retreat throughout the entirety of this product.



Color Core



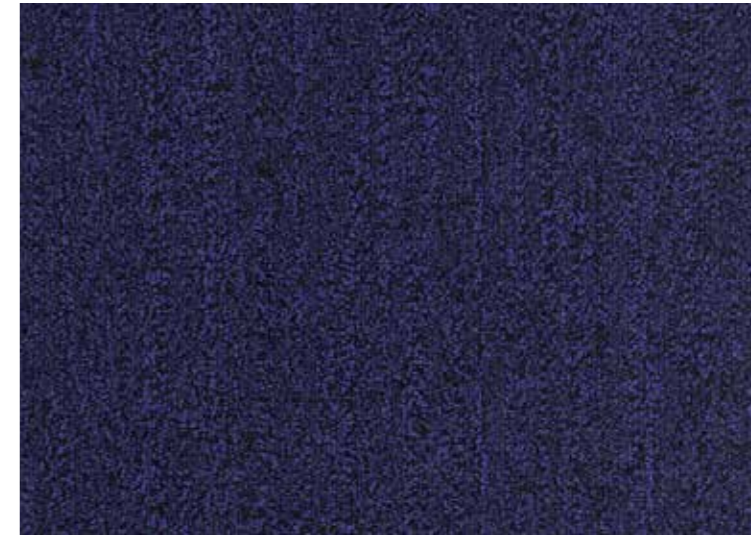
Bike 402549



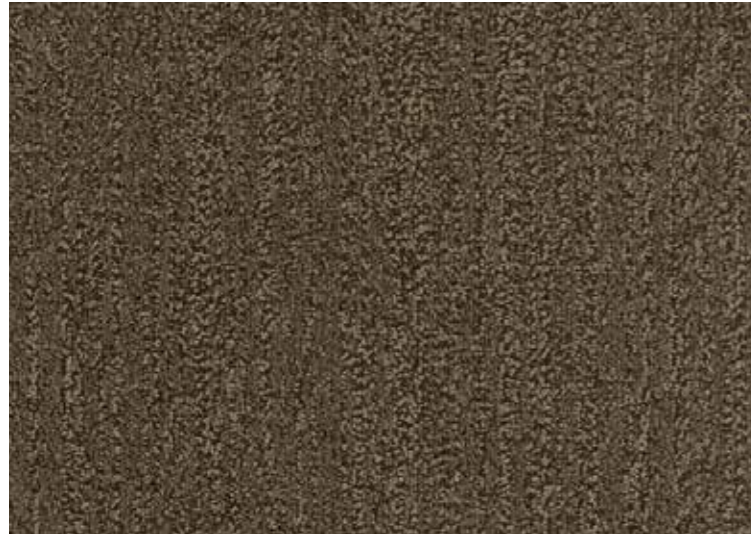
Breathe 402541



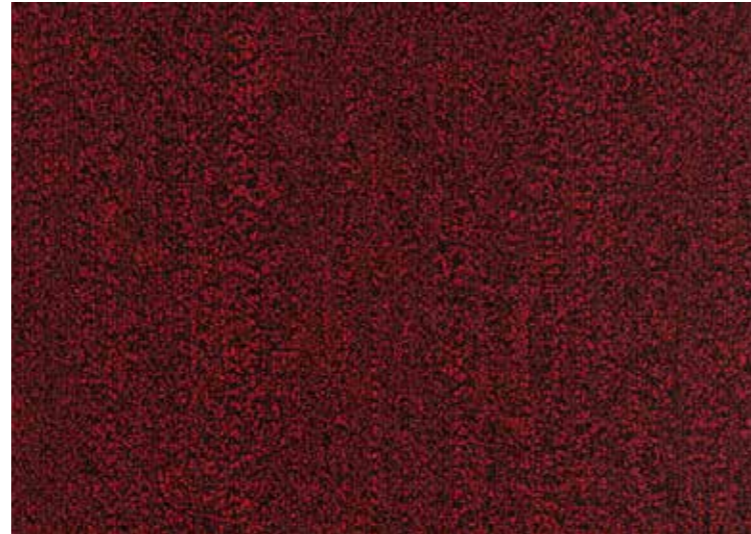
Hike 402545



Laugh 402556



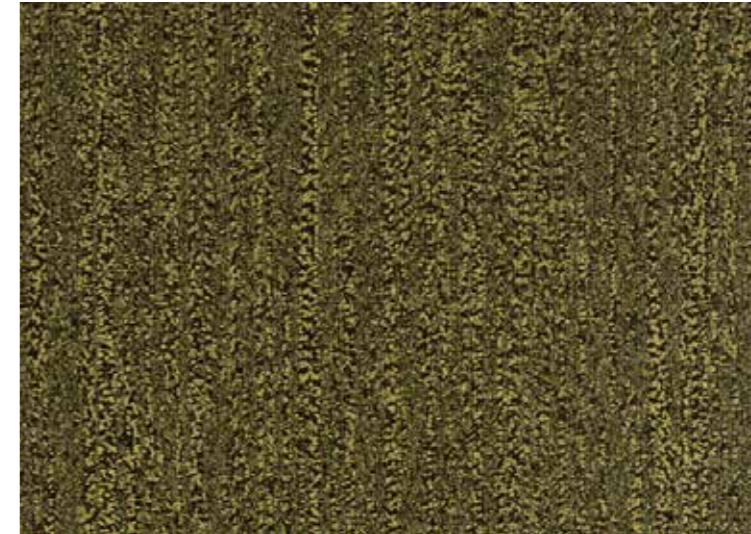
Cook 402542



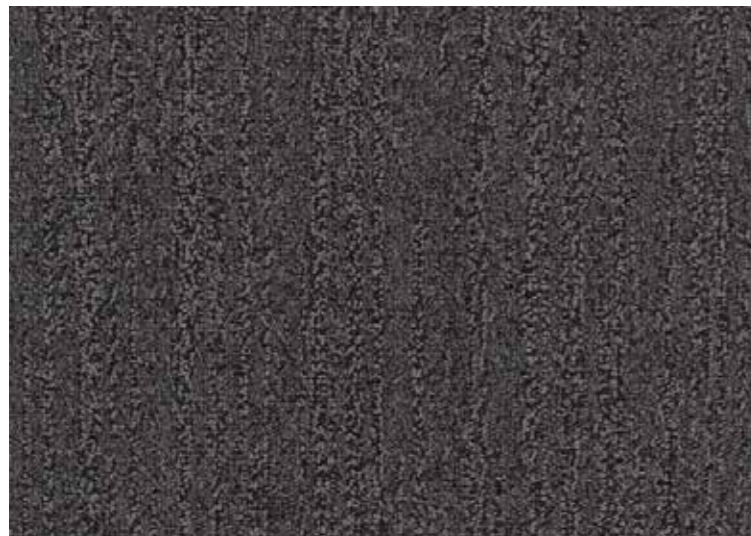
Dance 402555



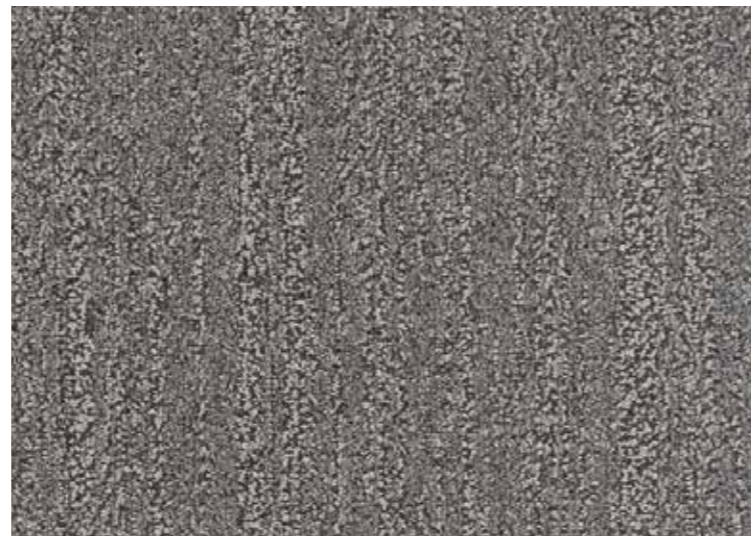
Listen 402547



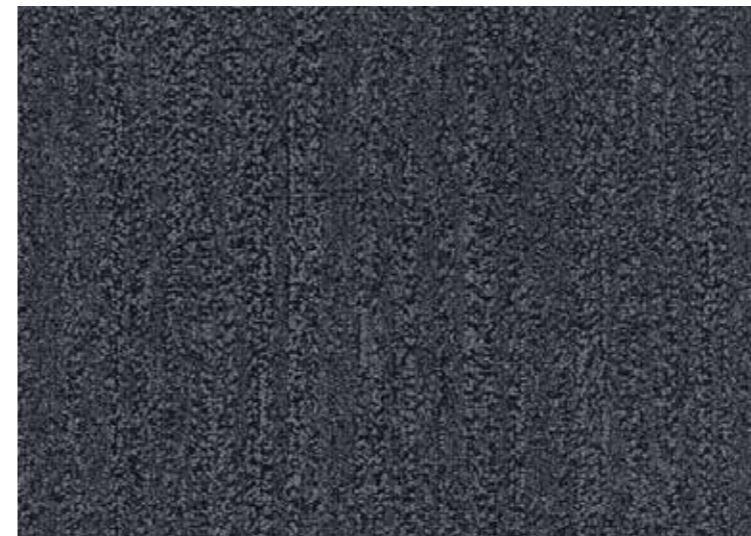
Run 402553



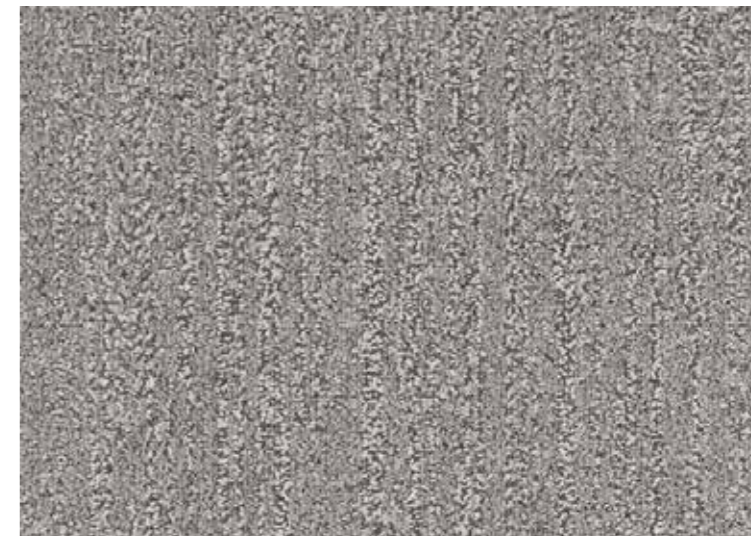
Drive 402550



Eat 402548



See 402558

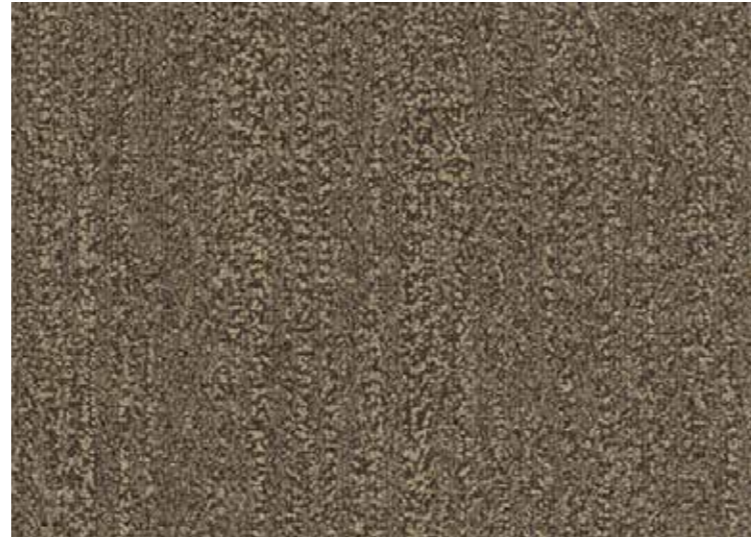


Sing 402546

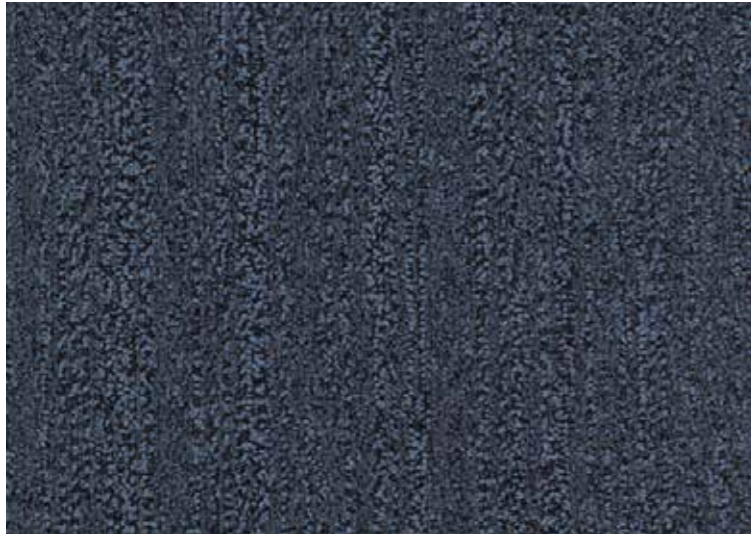
Color Core



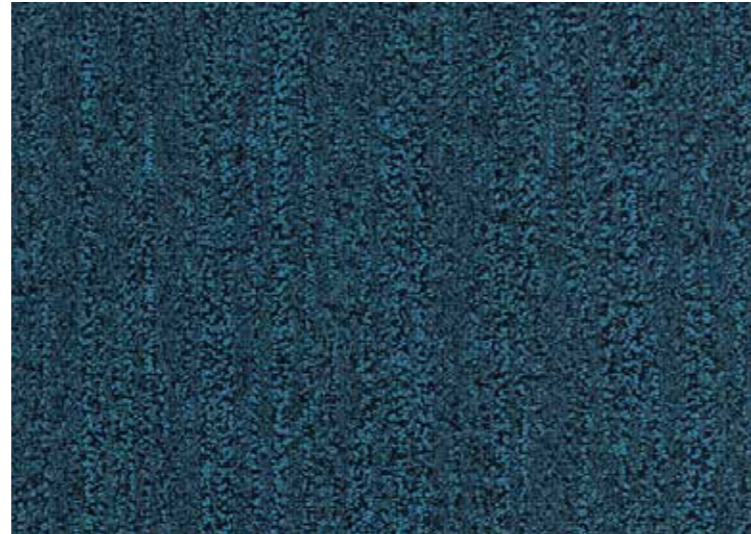
Sleep 402543



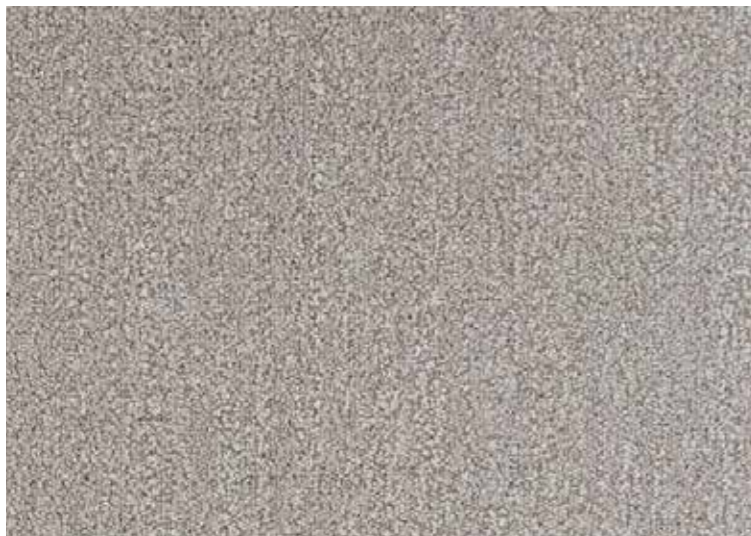
Smile 402540



Speak 402551



Swim 402552



Touch 402559



Walk 402544



Product Specifications

	Broadloom	Tile
Construction	Tufted Level Loop	
Yarn	Universal Fibres 6,6 Nylon	
Dye Method	Solution Dyed	
Machine Gauge	1/12 in (47.2 ends/10cm)	
Total Weight	2,170.0 g /m2	1,966.5 g/m2
Total Thickness	0.190 in (4.8 mm)	0.170 in (4.3 mm)
Backing	Optimum Barrier II	Affirma II Tile and Plank
Size	12 ft (3.66 m) width	Tile - 60.96 x 60.96 cm Plank - 45.72 x 91.44 cm
Pattern Repeat	N/A	N/A



BENTLEY



Declare.



www.geoflooring.com.au