

GEO FLOORING



*Coin Op 2
High Score 2
Multiplay 2*



*Coin Op 2,
Colour - Pwned,
Installation - Brick Plank*

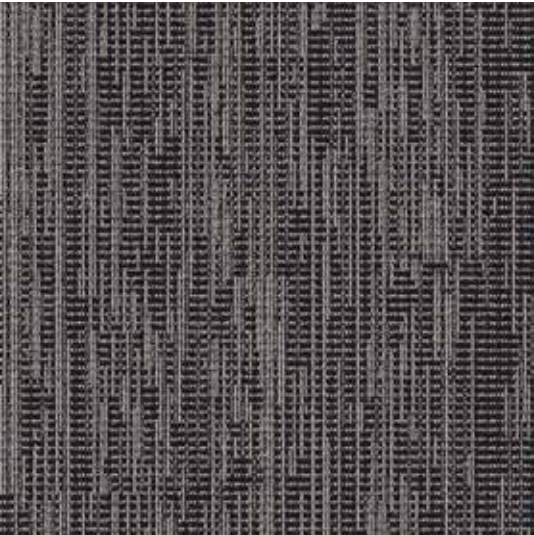


*Coin Op 2,
Colour - Bots,
Installation - Monolithic Tile*

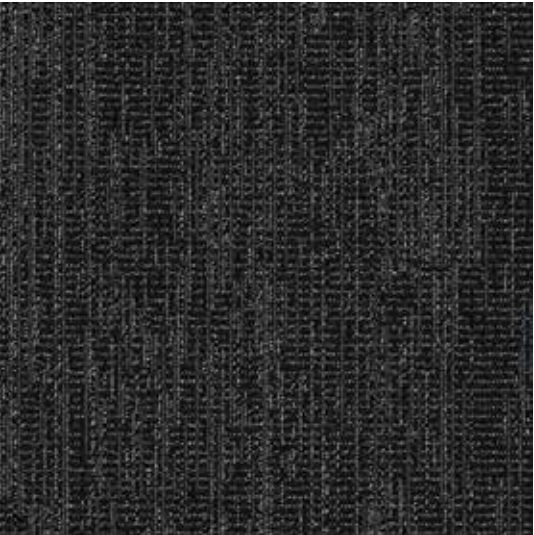
Coin Op 2



AFK 400055



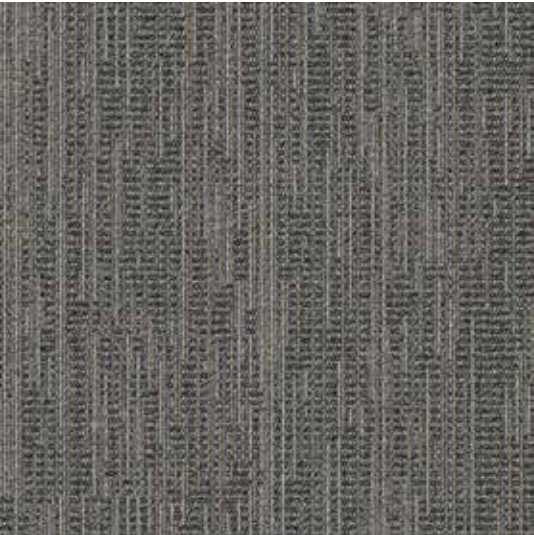
Bots 400061



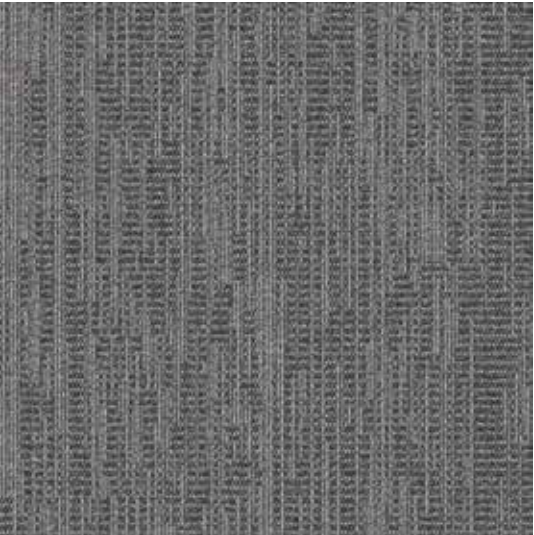
Clans 400066



Clutch 400059

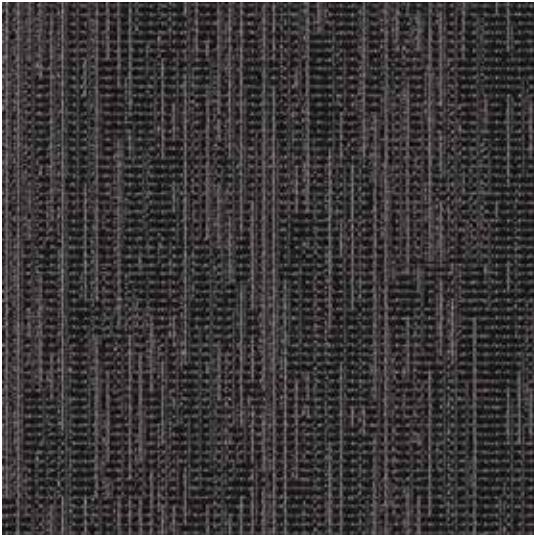


Cool Down 400057

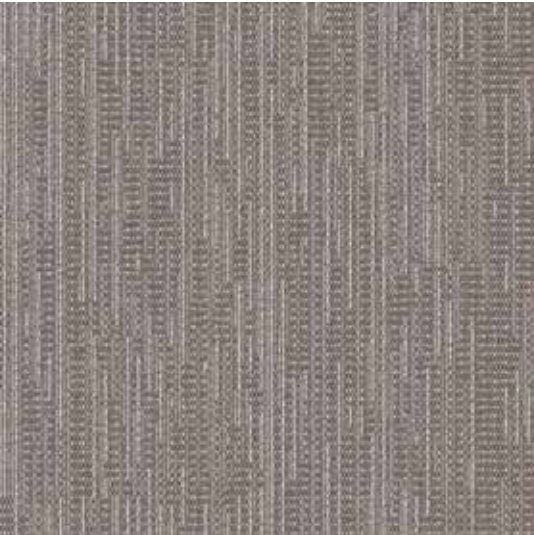


DLC 400064

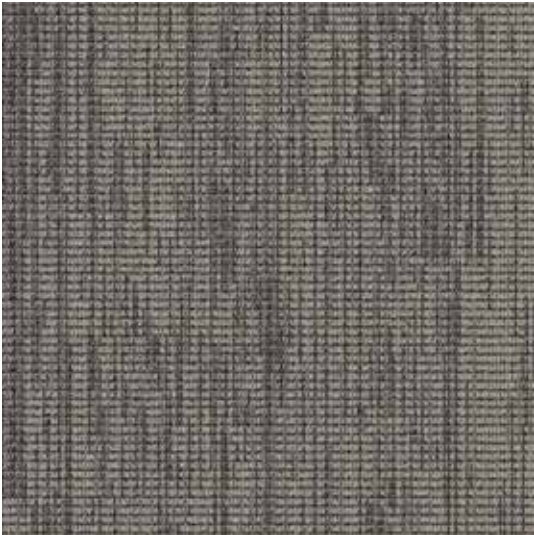
Coin Op 2



Easter Eggs 400062



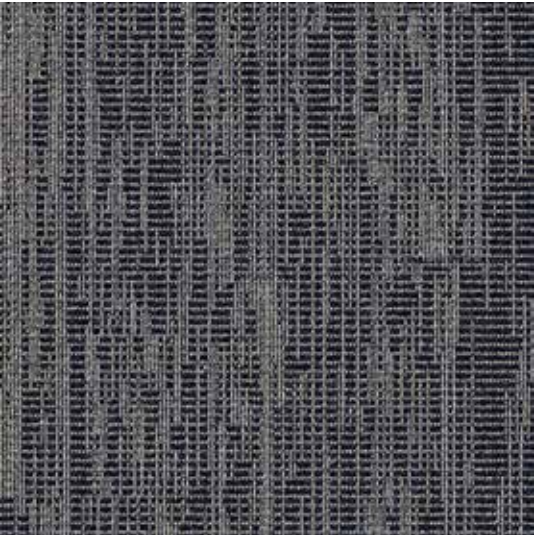
GG 400060



HUD 400063



Ping 400058



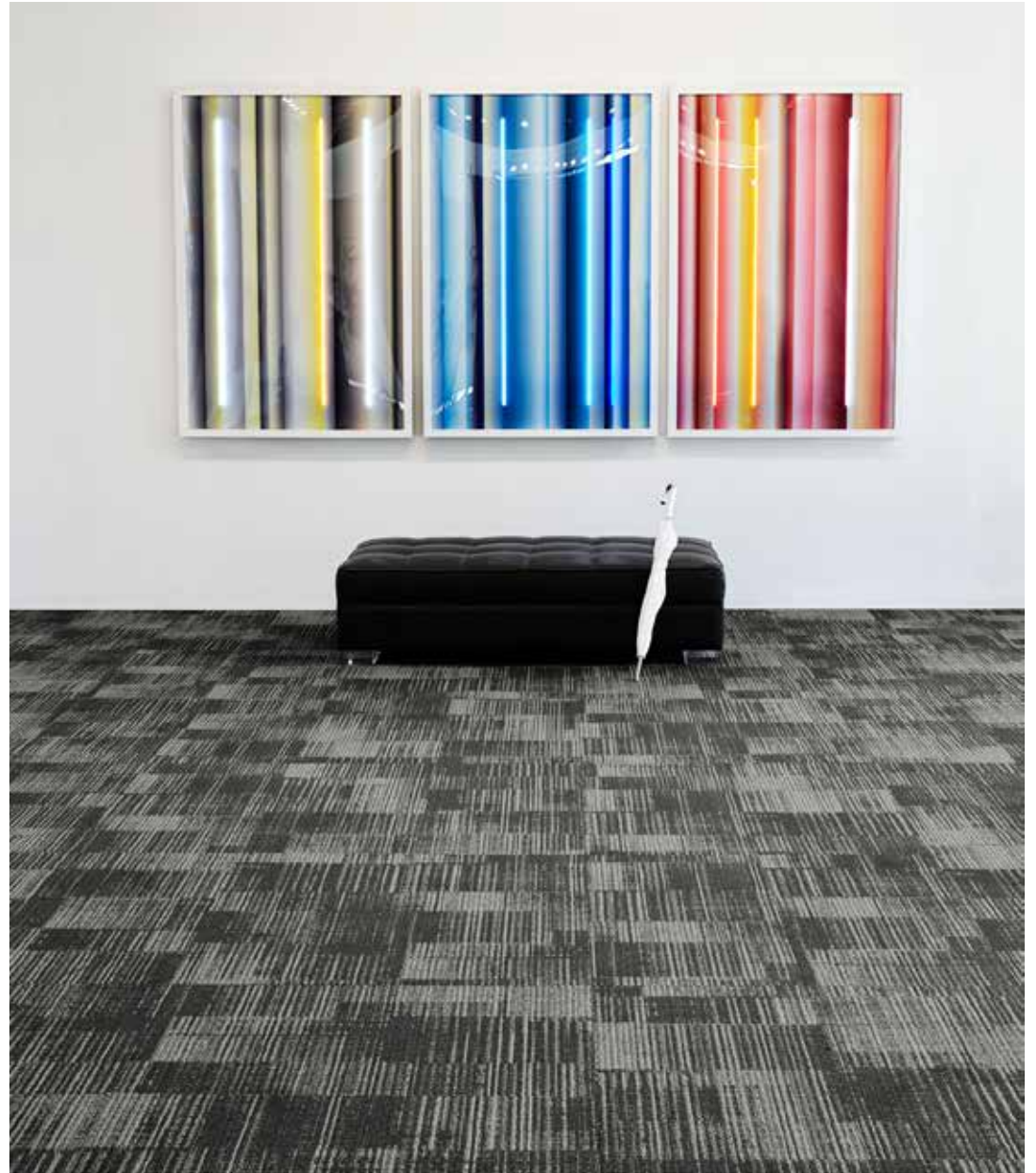
PWned 400065



Reboot 400056



*High Score 2,
Colour - Bots,
Installation - Broadloom*

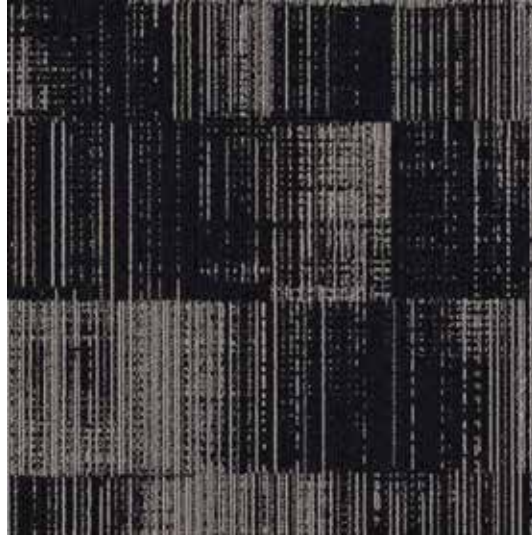


*High Score 2,
Colour - Pwned,
Installation - Monolithic Plank*

High Score 2



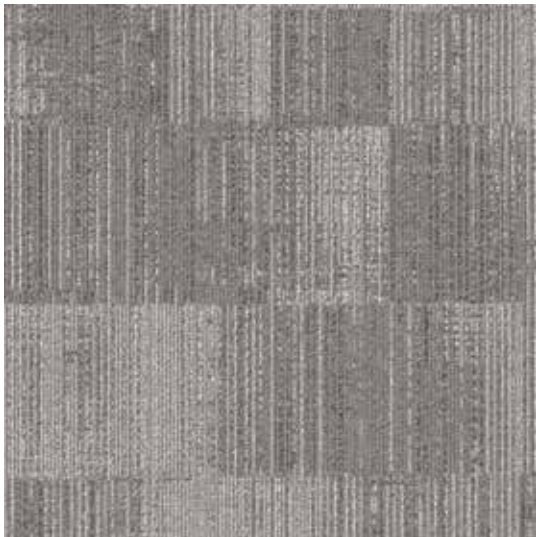
AFK 400055



Bots 400061



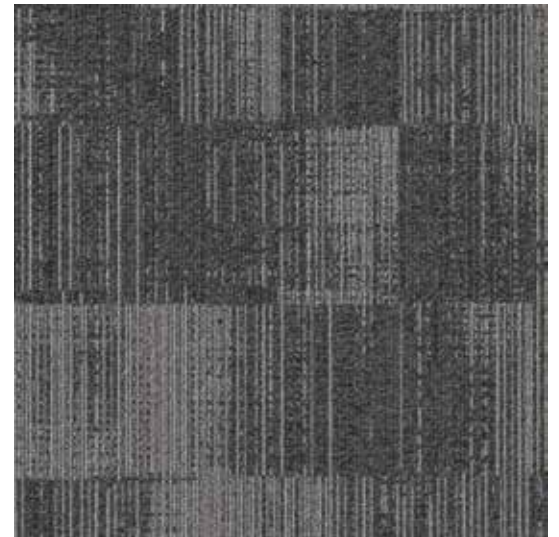
Clans 400066



Clutch 400059

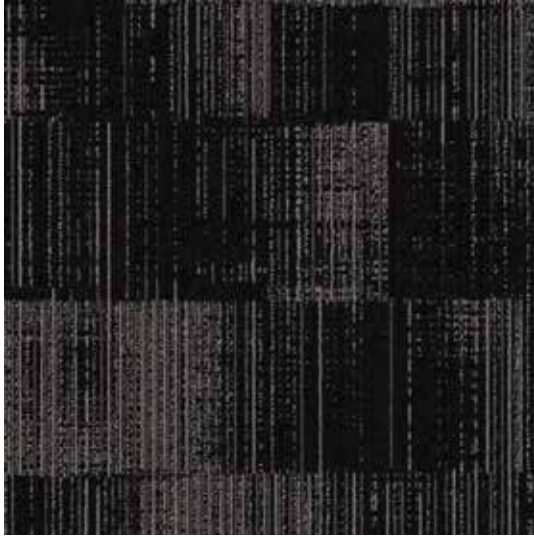


Cool Down 400057



DLC 400064

High Score 2



Easter Eggs 400062



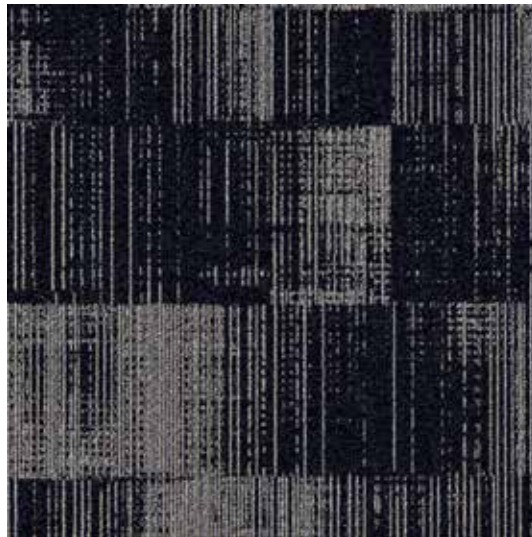
GG 400060



HUD 400063



Ping 400058



PWNERD 400065



Reboot 400056



*Multiplay 2,
Colour - Bots,
Installation - Herringbone Plank*

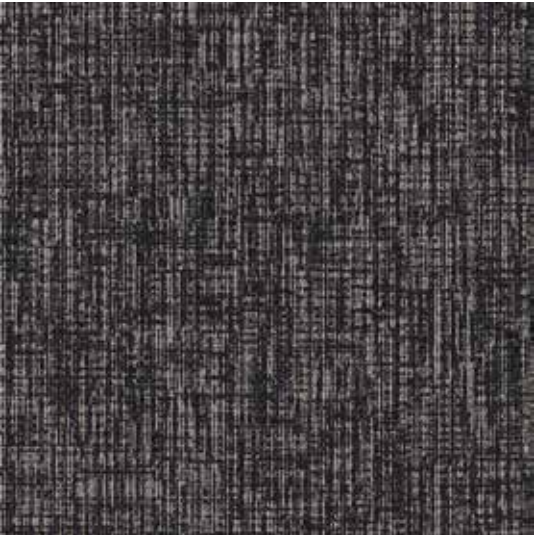


*Multiplay 2,
Colour - AFK,
Installation - Monolithic Tile*

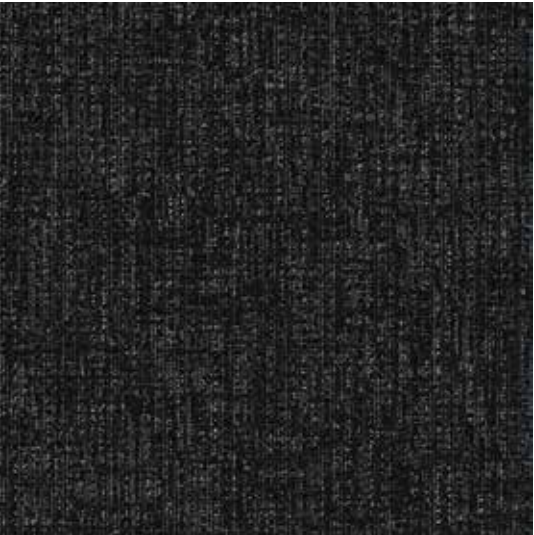
Multiplay 2



AFK 400055



Bots 400061



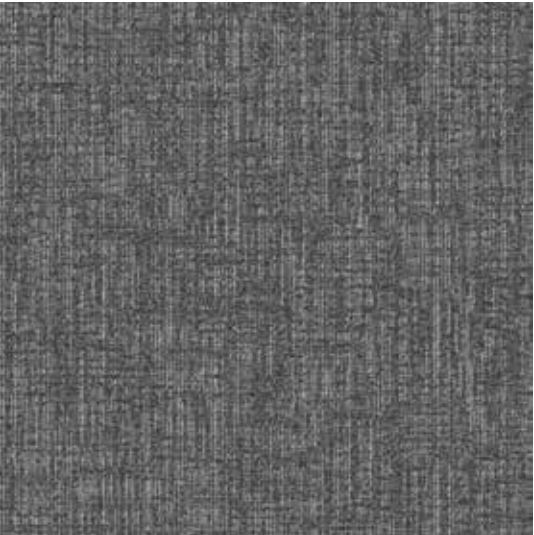
Clans 400066



Clutch 400059

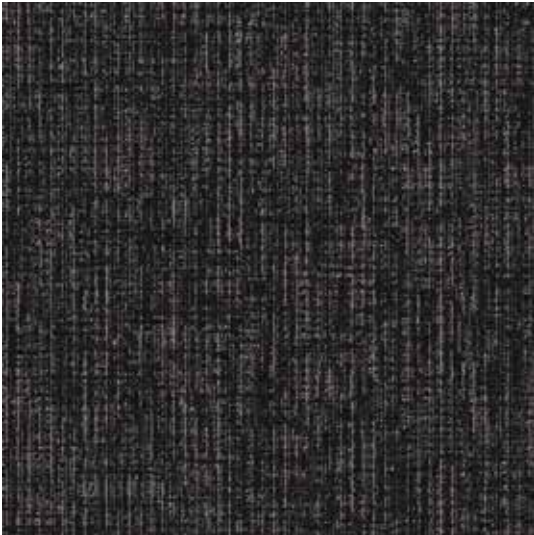


Cool Down 400057

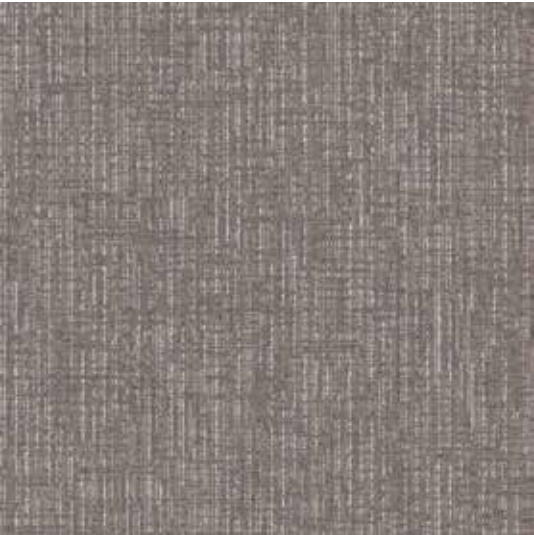


DLC 400064

Multiplay 2



Easter Eggs 400062



GG 400060



HUD 400063



Ping 400058



PWNEED 400065



Reboot 400056

COIN OP 2, HIGH SCORE 2, MULTIPLAY 2

<i>Product</i>		<i>Broadloom</i>	<i>EliteFlex</i>	<i>Modular</i>
<i>Coin Op 2</i>	<i>Backing</i>	Optimum Barrier II	EliteFlex Cushion	Affirma II
	<i>Size</i>	3.66 m Width	1.83 m Width	Tile - 60.96 x 60.96 cm / Plank - 45.72 x9 1.44 cm
	<i>Total Weight</i>	2,475.1 g/m3	2,949.8 g/m3	2,102.2 g/m3
	<i>Stitches</i>	10.9 / inch (42.9 ends/10 cm)		
	<i>Thickness</i>	5.8 mm	8.1 mm	5.3 mm
<i>High Score 2</i>	<i>Backing</i>	Optimum Barrier II	N/A	Affirma II
	<i>Size</i>	3.66 m Width		Tile - 60.96 x 60.96 cm / Plank - 45.72 x9 1.44 cm
	<i>Total Weight</i>	2,475.1 g/m3		2,102.2 g/m3
	<i>Stitches</i>	9.9 / inch (39 ends/10 cm)		9.9 / inch (39 ends/10 cm)
	<i>Thickness</i>	5.8 mm		5.3 mm
<i>Multiplay 2</i>	<i>Size</i>	3.66 m Width	1.83 m Width	Tile - 60.96 x 60.96 cm / Plank - 45.72 x9 1.44 cm
	<i>Total Weight</i>	2,475.1 g/m3	2,949.8 g/m3	2,102.2 g/m3
	<i>Stitches</i>	10 / inch (39.4 ends / 10 cm)		
	<i>Thickness</i>	5.8 mm	8.1 mm	5.3 mm
	<i>All Products</i>	<i>Construction</i>	Tufted Textured Loop	
<i>Fibre</i>		Bentley Premium Type Nylon		
<i>Machine Gauge</i>		1/12 in (47.2 ends/10 cm)		
<i>Dye Method</i>		Solution Dyed		

GEO Flooring Pty Ltd

www.geoflooring.com.au

info@geoflooring.com.au

+61 2 9960 4199

