



# GEO FLOORING



**Cohort**





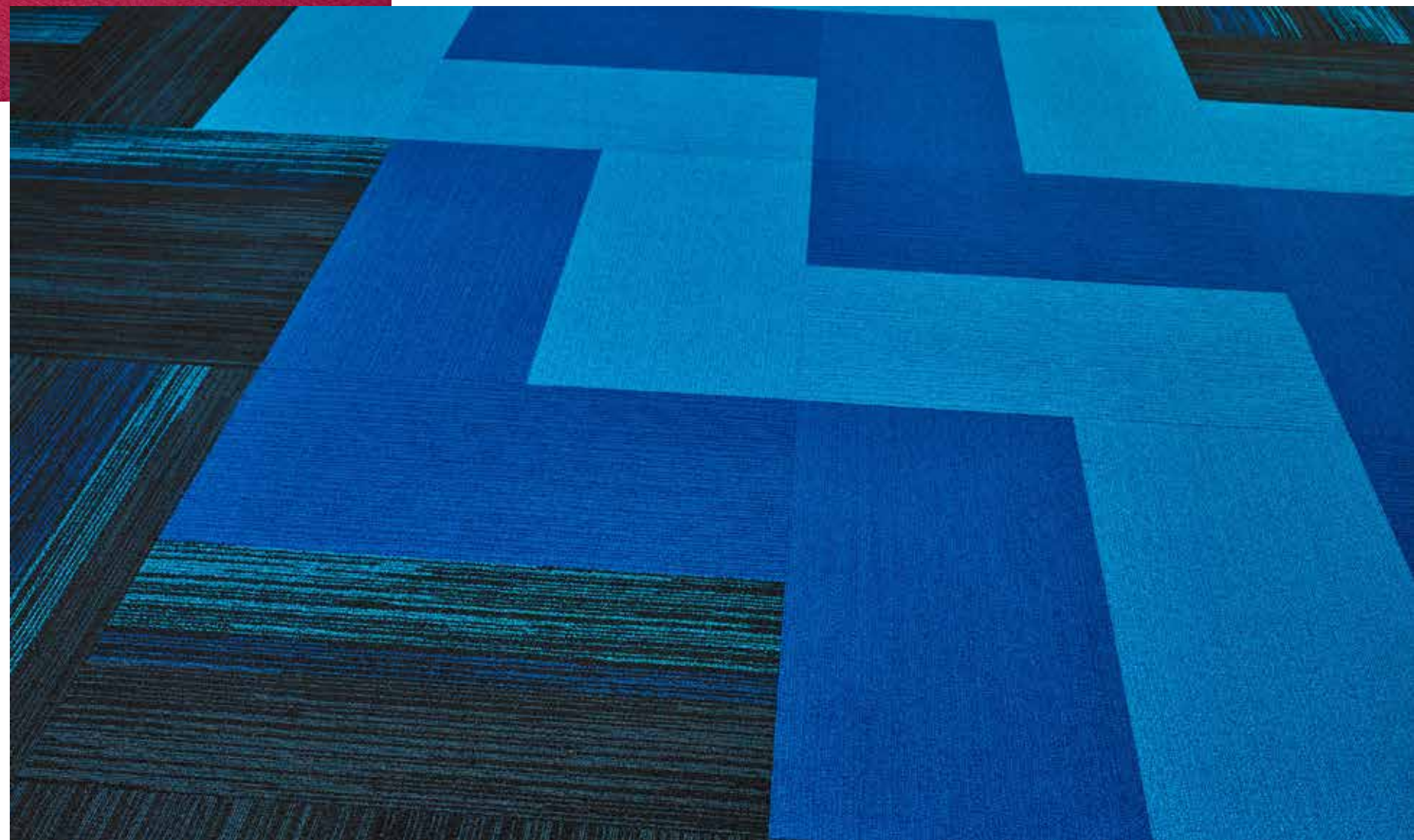


## Cohort

Cohort, is designed as a near-solid coordinate to marry with any Bentley product or collection.

With its ability to bring allied spark to any project, Cohort's companionship is simply meant to be.

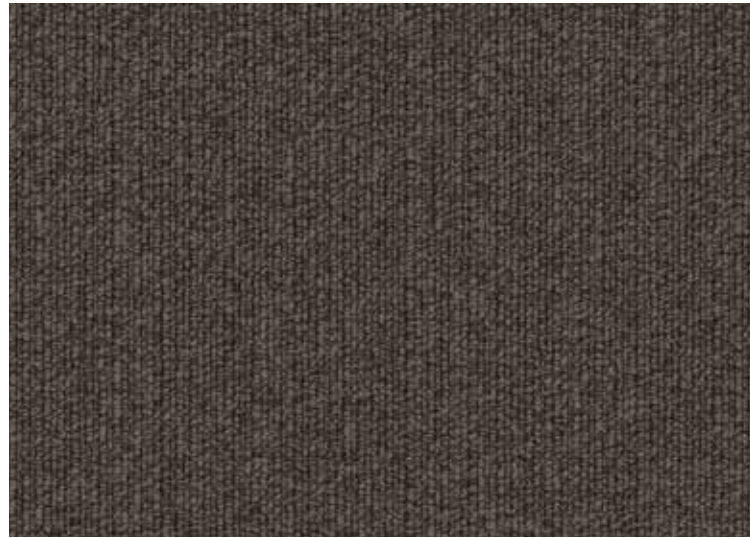
Great chemistry is the spice of life. It's like cosmically finding your better half and recognizing your indisputable destiny to meet.



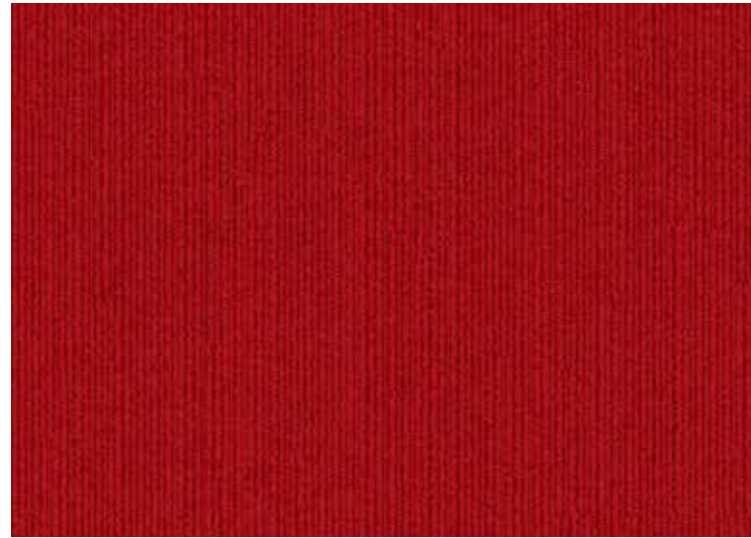


# Cohort

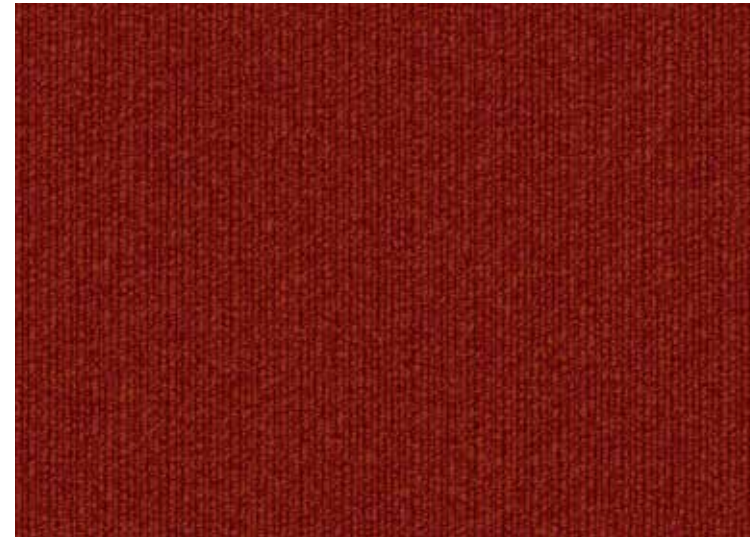
---



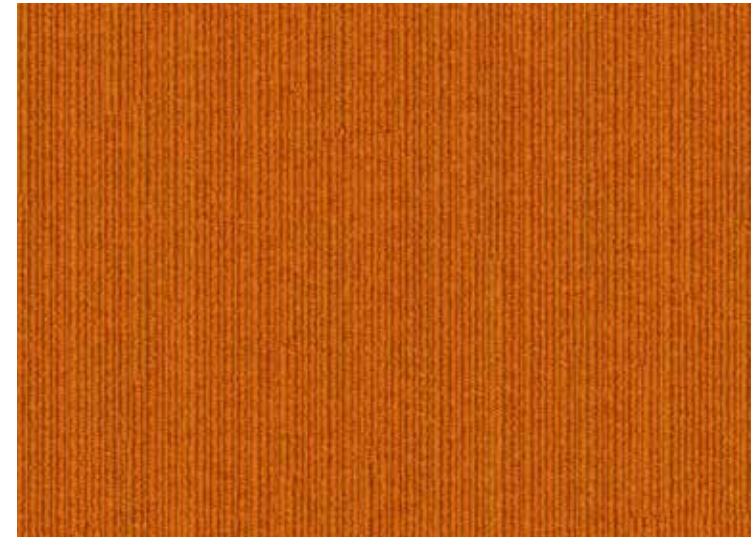
Brick + Mortar 400363



Dog + Pony 400352



Lock + Key 400351



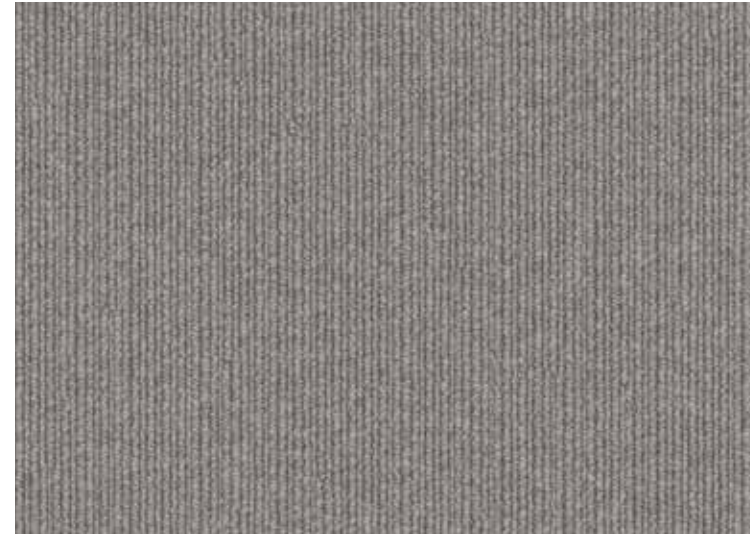
Lost + Found 400349



Flora + Fauna 400346



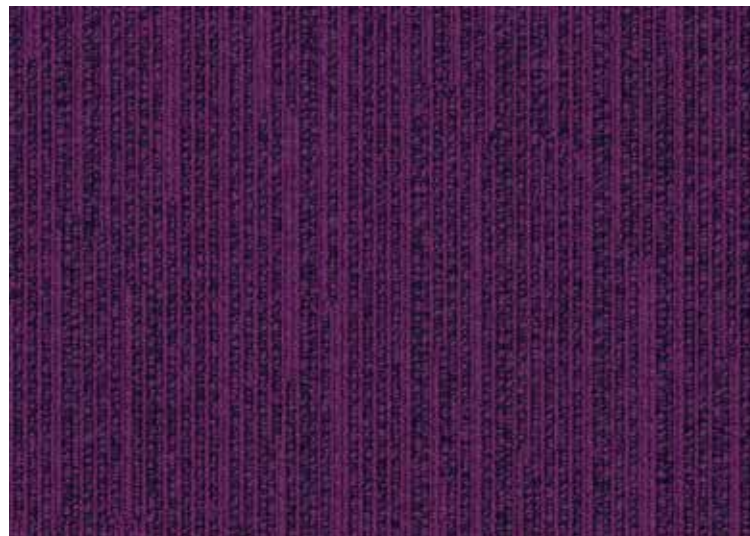
Fun + Games 400353



Nickel + Dime 400359



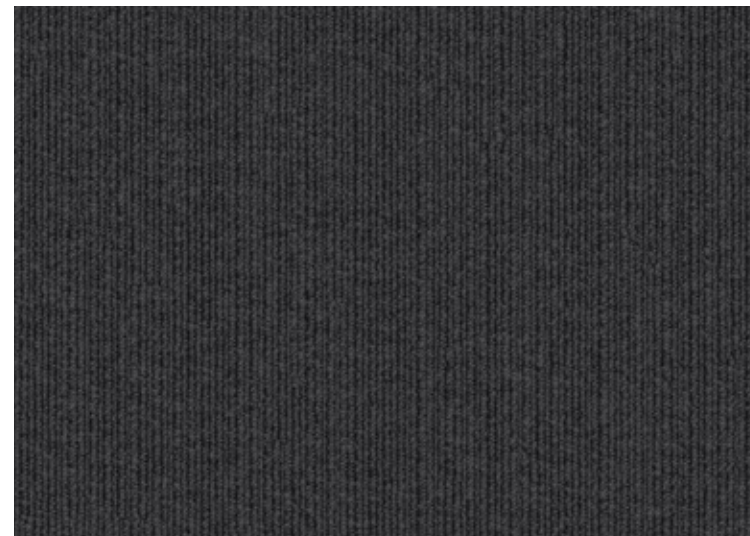
Nigh + Day 400357



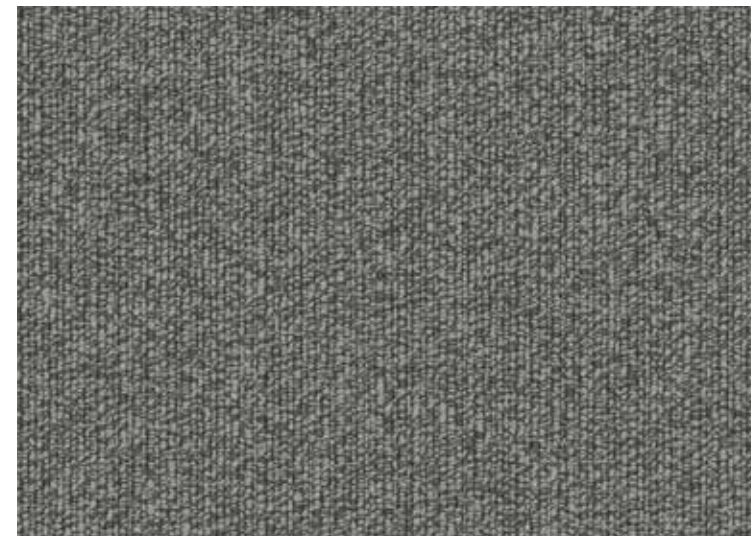
King + Queen 400355



Law + Order 400348



Nuts + Bolts 400362

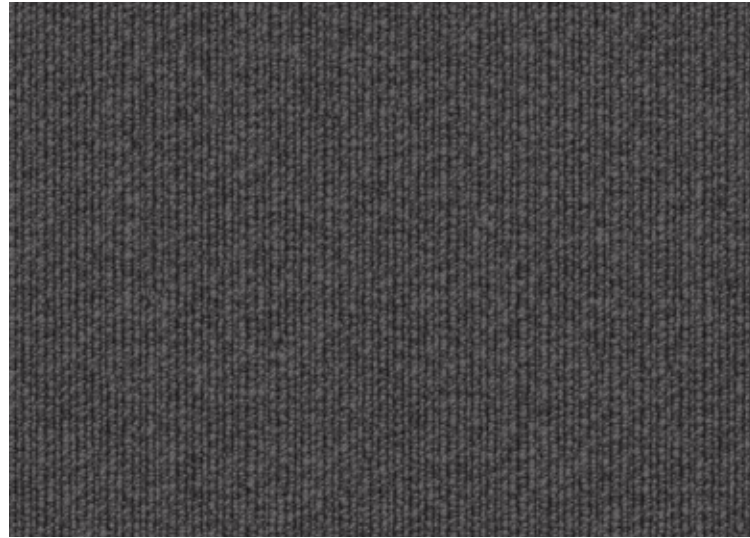


Pen + Pencil 400358

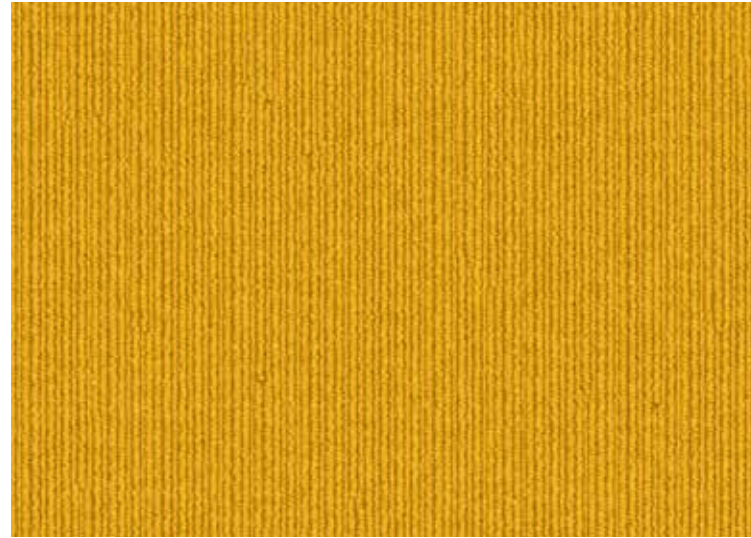


# Cohort

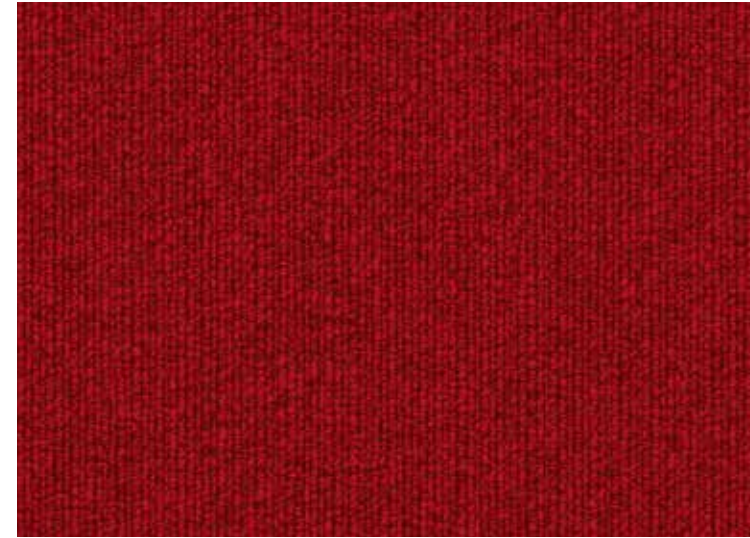
---



Salt + Pepper 400360



Sun + Moon 400347



Yin + Yang 400354



Supply + Demand 400350



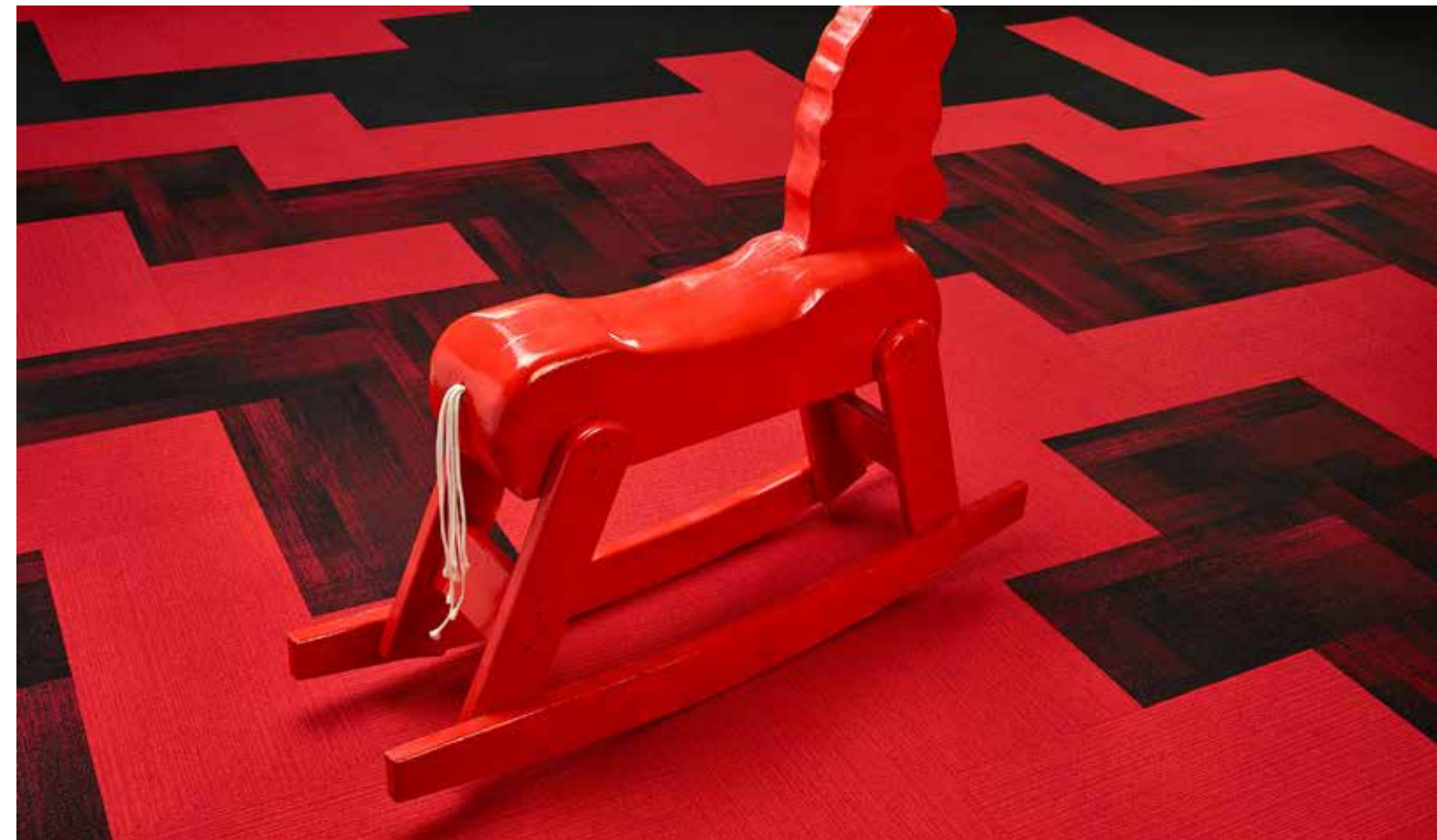
Thunder + Lightning 400345



Track + Field 400361



Wine + Cheese 400356





# Product Specifications

	Tile / Plank	Elite Flex
Construction	Tufted Textured Loop	
Yarn	Antron® Lumena DNA Nylon Type 6,6	
Dye Method	Solution Dyed	
Machine Gauge	5/64 in (50.4 ends/10cm)	
Total Weight	2,509.0 g /m2	2,136.1 g /m2
Total Thickness	0.210 in (5.3 mm)	0.210 in (5.3 mm)
Backing	Affirma II	Elite Flex
Size	Tile - 60.96 x 60.96 cm Plank - 45.72 x 91.44 cm	Roll Width - 6 ft (1.83 m)
Pattern Repeat	N/A	N/A



**BENTLEY**



**Declare.**





[www.geoflooring.com.au](http://www.geoflooring.com.au)